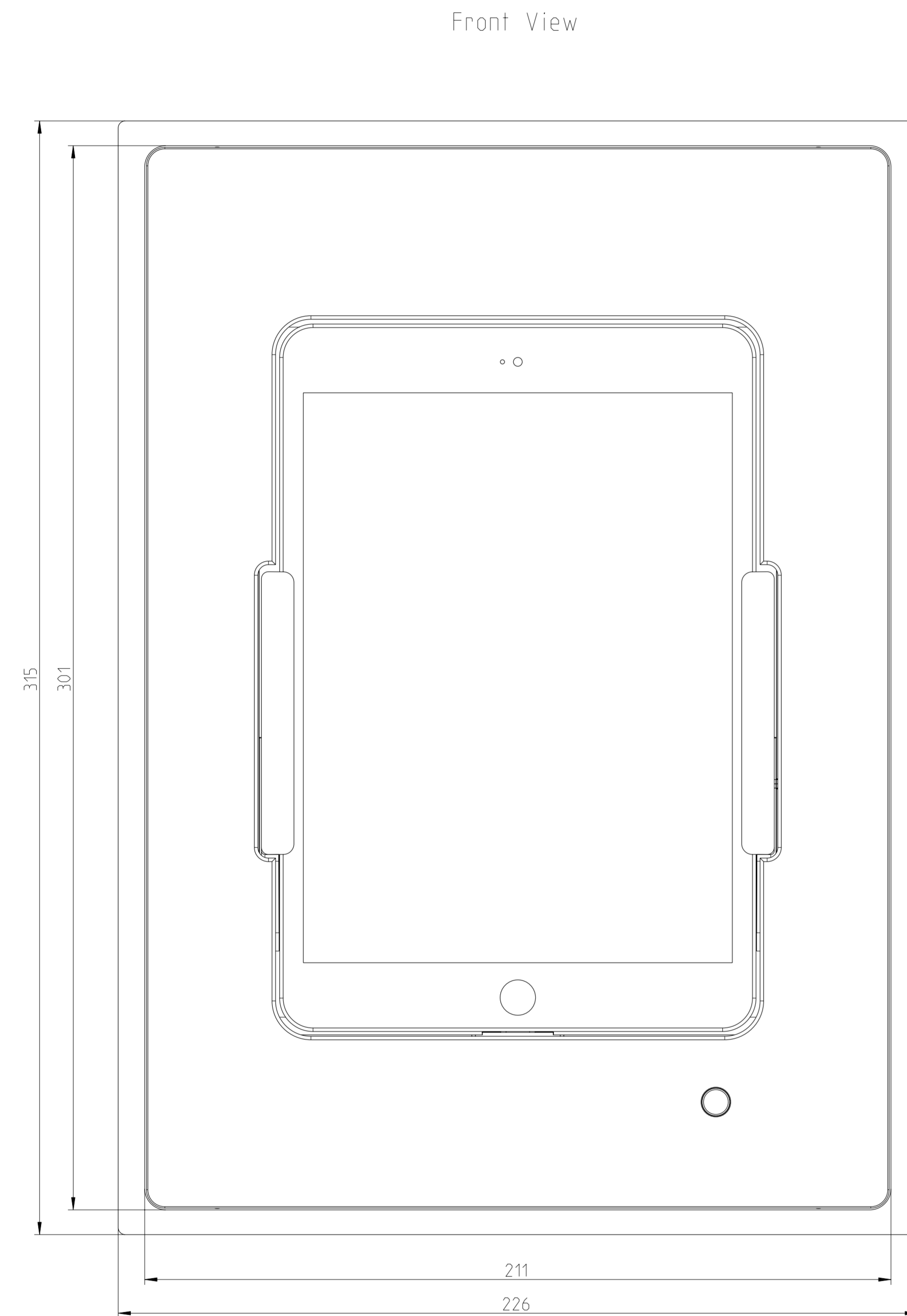
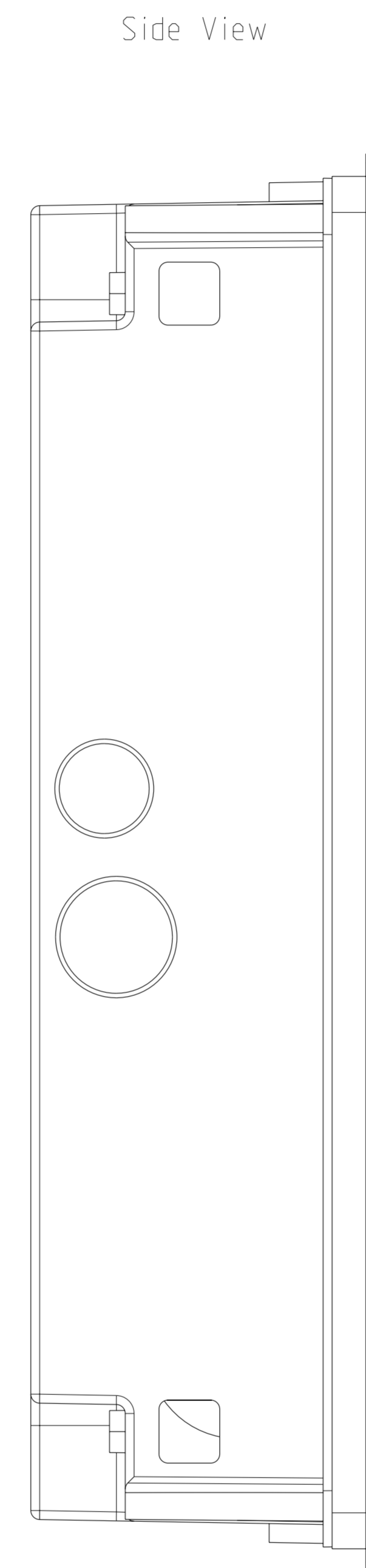




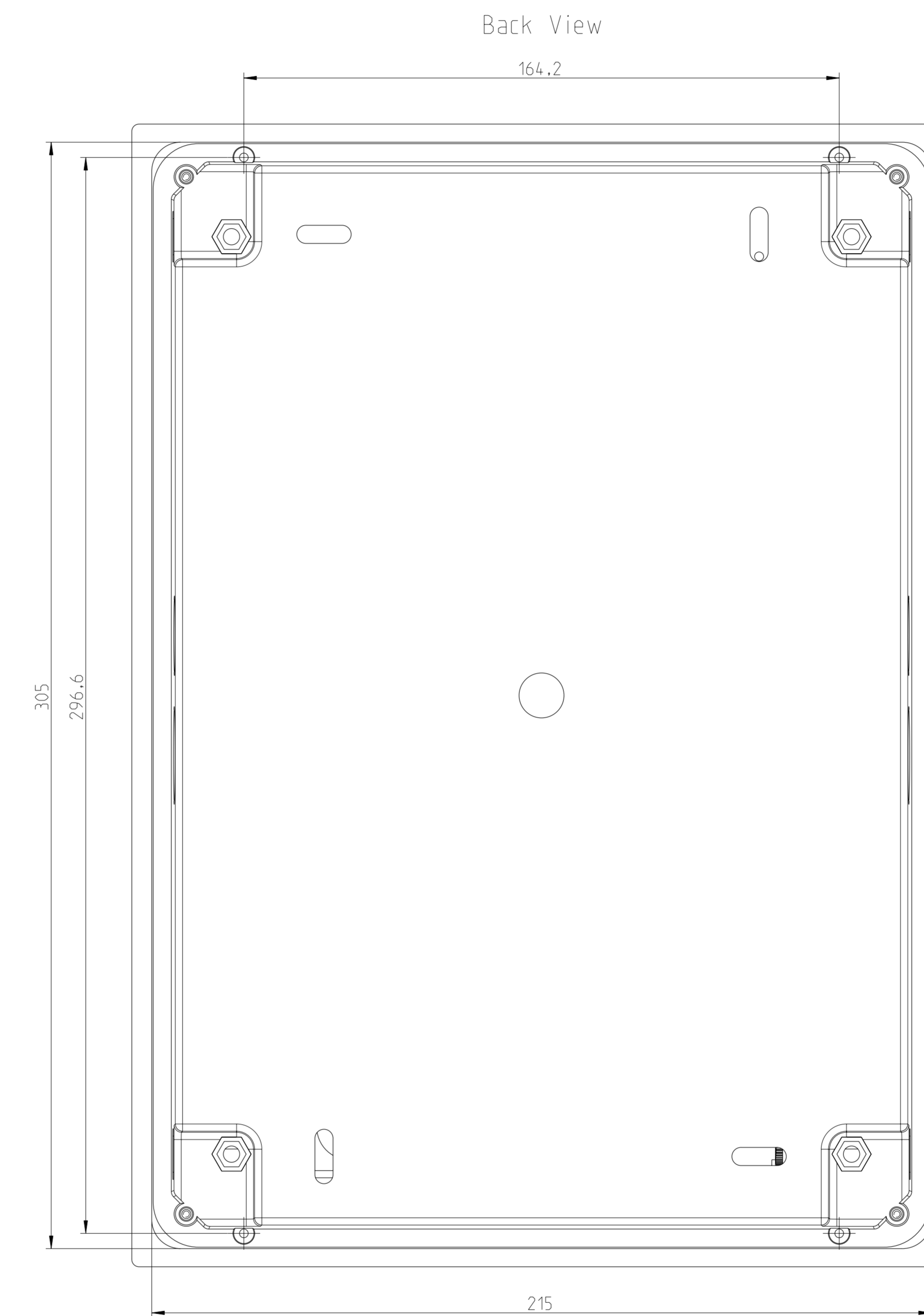
Bottom View



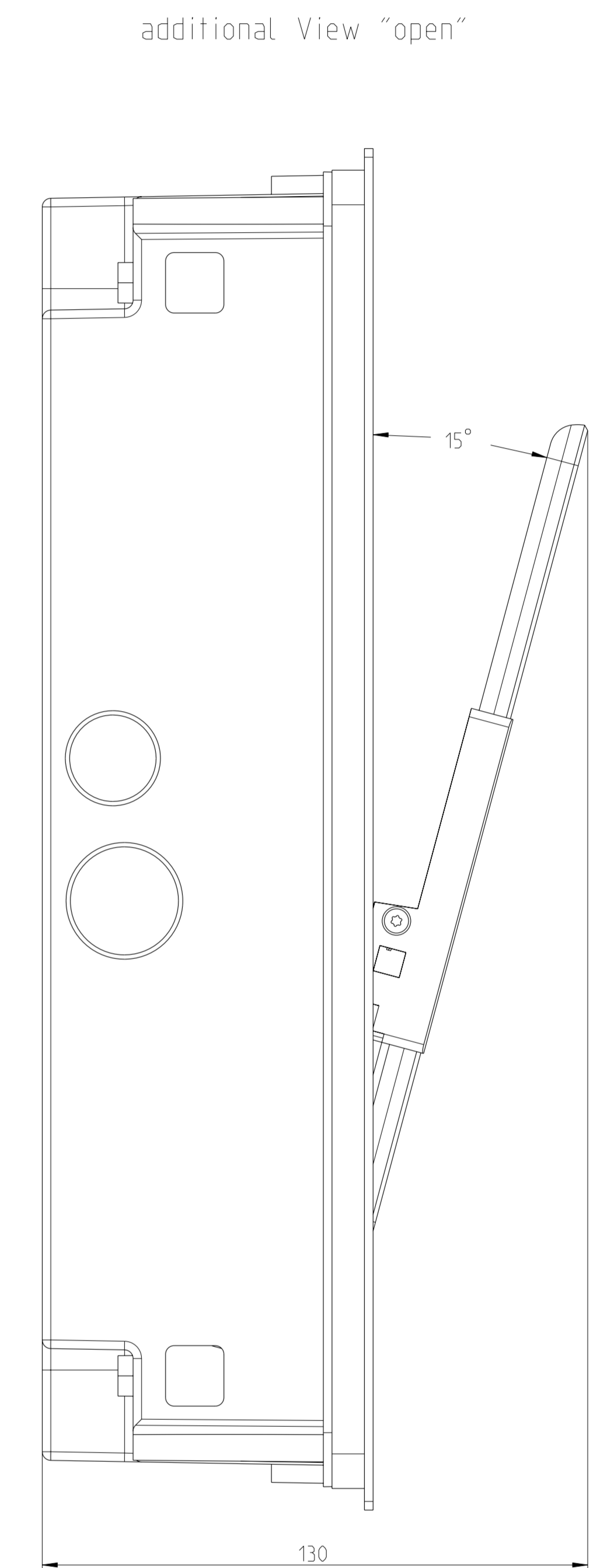
Front View



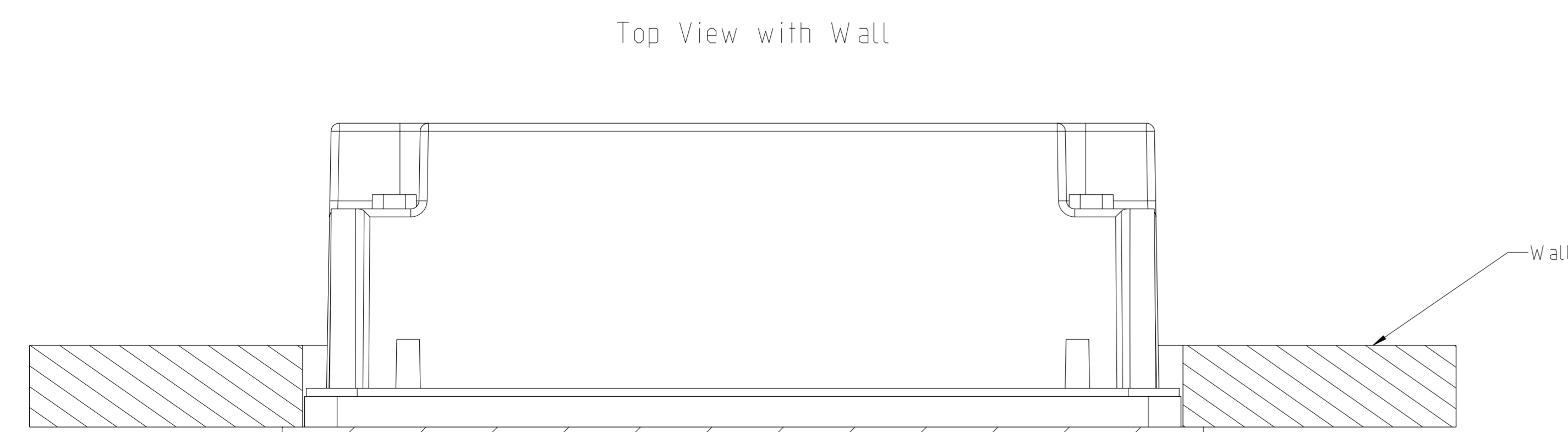
Side View



Back View



additional View "open"



Top View with Wall

—Wall

SCHNITT H-H

Oberflächen DIN ISO 1002		Allgemeine Anforderung ISO 2768 mittel			Maßstab 1:1 Werkstoff: Holzbohle	Oberfl. Befundung
+						
-	-	-	Datum	Name	Bemerkung	
-	-	-	Seit: 19. Feb. 74		I-Block miniD flush mounted	
-	-	-	Gepr.		ID-NO. ---	
-	-	-	Norm		Materialnummer - Revision RSE-MINI_AUFBAU_FLUSHMOUNTED	
-	-	-			RSE-MINI_AUFBAU_FLUSHMOUNTED	
Gepr.	Aenderungs	Datum	Name	Urspr.	RSE-MINI_AUFBAU_FLUSHMOUNTED Messzeichnungskat DIN 6764	Blatt 1 1 Bl.
					Format: A0	

dimensions valid for all flush mounted IRoom's IDock miniD  
bezel cut-out, guide rails and touchbutton depending on specific Model