



THE HOME OF INNOVATION.

Eltako

ELTAKO PROFESSIONAL SMART BUILDING



PROFESSIONAL
**SMART
BUILDING**



INTELLIGENT SOLUTIONS FOR YOUR ELECTRICAL INSTALLATION

Discover the many
different possibilities

It is our vision to establish the Eltako Wireless Building as a standard in Commercial Buildings through out Europe and beyond.
This is a path we will continue to travel with you our customer.

ELTAKO PROFESSIONAL SMART BUILDING

70 years of experience in smart building systems

The name of Eltako has stood for performance and inventiveness for over 70 years, for a high level of capability and quality in the development and production of innovative products for building installation and control systems.

Safe investment

It seems almost every day a new manufacturer launches a "New Smart Control Solution" on the market. However, can they offer the history of long term support to customers like Eltako? Can they be assured of quality and service that Eltako offers every day? Will the company be here today and gone tomorrow and what about spare parts?

Eltako stands for tradition and quality. When you opt for Eltako Professional products, you choose a system which is developed from many years of experience and which has a long and growing future.

EnOcean wireless standard

Eltako Commercial Building control devices are based on the world-wide wireless Open Protocol standard. Exclusive EnOcean highlights include wireless pushbuttons and window/door contacts with energy generators. Many devices have no batteries and are therefore maintenance-free. As a major stakeholder of the EnOcean Alliance, we stand for continuous development of the international EnOcean wireless standard.

Employees

Our sales and engineering team is present all over Europe and beyond and will support you to find a solution to your requirements. We can provide site support, assistance via our Hotline or WhatsApp chat. We will be there for you from the design stage through to completion.

Development and Quality "Made in Germany"

Eltako is a family-owned business with its head offices in Fellbach, a town on the outskirts of Stuttgart in Germany. The company has been in existence for over 70 years and has two manufacturing plants one for electromechanical switchgear along with the central warehouse. The second is for Electronic devices, they are both certified to ISO 9001-2015. Research and development, quality management, customer service, sales management and the central administration are located at the company's head offices in Fellbach.

5-year warranty

Since 2019 we have offered warranty period of 5 years from the date of manufacture on all products we supply bearing the ELTAKO label.

CENTRALISED

E.G.

FAM14

FSR14-2x

FUD14



Centralised Wireless Building installation

In the centralised Wireless Building installation, wireless actuators are fitted centrally in distributor boxes to control individual functions from there. Jumpers enable communication between the devices and supply the power needed.

Wireless pushbuttons and sensors can be fitted wherever they are required, to walls, ceilings, on glass or furniture without having to route additional wiring.

The Wireless Building installation is configured manually or by using the PCT14 software which provides an extensive number of optional settings and is a quick method to teach in devices.

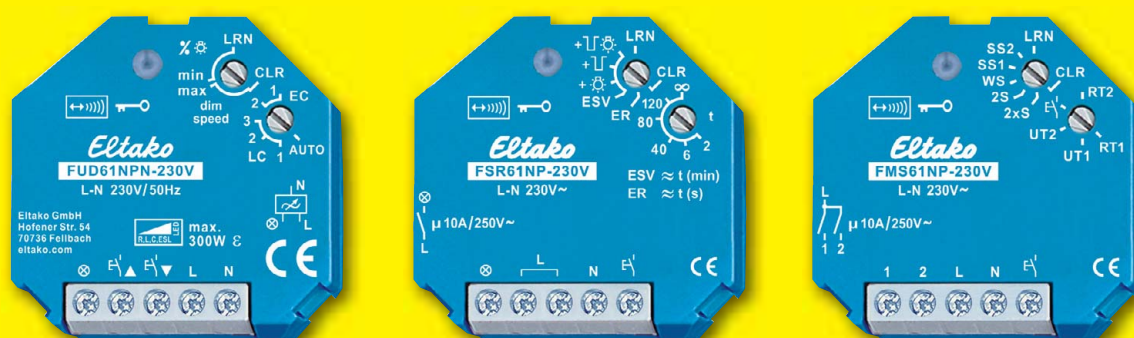
DECENTRALISED

E.G.

FUD61NPN-230V

FSR61NP-230V

FMS61NP-230V



Decentralised Wireless Building installation

In the decentralised Wireless Building installation, wireless actuators are usually fitted to control individual functions from there. Teach-in is performed manually on each device by means of rotary switches.

Wireless pushbuttons and sensors can be fitted wherever they are required, to walls, ceilings, on glass or furniture.

This is a simple and cost-effective way to implement all Wireless Building applications without the additional need to route wiring and is especially interesting for renovating or refurbishing buildings or to supplement conventional electrical installations.



"Hands Free" Sensors

With our range of non-contact sensor we can offer customers like hospitals, dentists and other medical facilities the option to have switching, without having to touch a surface.

They can of cause be used in any facility where avoiding surface contact is preferred.



**Wireless elbow
pushbutton**
FET55E-wg



**Wireless proximity
sensor**
FNS55EB-wg



NFC sensor
NFC55E-wg



Wireless motion sensor
FBH55SB-wg



Elegant and versatile - iPad Docking Station from Eltako.

Made exclusively from high-quality aluminium and glass, this will transform the Apple iPad into a luxurious wall mounted smart control centre.

The Smart Power Management ensures that the iPad is charged and when the battery level reaches 100 % it stops charging automatically. This protects the battery and extends their service life.

- Sliding charging connector
- Intelligent power management
- Lightning or USB-C charging
- Surface mounting for all sizes of iPad.
- Flush fitting for 10.2" and 10.5" models



OnWall-sz



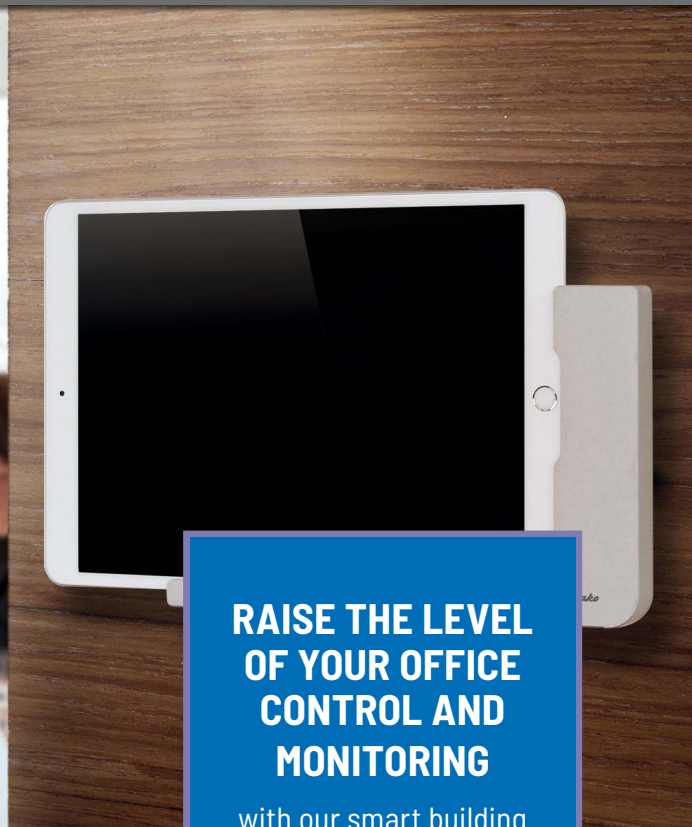
OnWall-al



InWall-10-sz



InWall-10-ws



**RAISE THE LEVEL
OF YOUR OFFICE
CONTROL AND
MONITORING**

with our smart building
control system



Wireless Pushbutton Control

Press the Central Off pushbutton to switch all the required lighting off when you leave the premises.

Other devices like heating can be set to energy save mode. However devices like alarms, fridges, outdoor lights, etc. will be unaffected. All this at the touch of a button.

If you want to control devices by a timer, like shop window lights or illuminated signage this can be easily be done.
Eltako also offer the option to have switches engraved with symbols, we have a large selection to choose from.



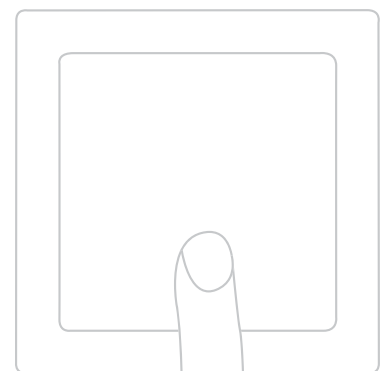
Wireless 4-way pushbutton with rocker without battery or wire
F2T55E



Wireless 4-way pushbutton with double rocker without wire
F4T55EB



Wireless 4-way profile pushbutton 55 x 55 mm without battery or wire
F4PT55





Window and Door monitoring and Control

Fresh air is the best thing for all of us. However, opening windows and leaving the heating or air conditioning running is a waste of energy and money. Our range of window and door contact's can be used in conjunction with our wireless control actuators to run the building efficiently and effortlessly. Our various contacts can be added to new or existing windows and doors and because they are wireless they are easy to install.

See what Eltako can do to increase the Wellness of your building and keep your energy bills down as well as improve security by knowing which doors and windows are open or closed.





Temperature and Air Quality Control

Environmental control is one of the key elements of any building control system and it is imperative that it is controlled and monitored so the building can be as comfortable and energy efficient as possible. This control can take many forms from controlling air handling plant to radiators. The issue of blind / shutter control has to also be considered since these can impact on light and heat levels. Air quality (temperature, humidity, VOC and CO₂) levels has also to be taken into account.

Eltako has a wide range of devices to meet these requirements.



FUTH55D/12-24V UC-wg
Wireless thermo clock/hygrostat



FTR55SB-wg
Wireless temperature controller with hand wheel, 2 solar cells and battery



FTR55HB-wg
Wireless temperature controller with hand wheel and battery



FTR55DSB-wg
Wireless temperature controller with display



FC02TF65-wg
Wireless indoor CO₂+temperature+humidity sensor



FLGTF55-230V-wg
Wireless air quality+temperature+humidity sensor



FKS-SV
Wireless small actuator Smart Valve



FLT58-am
Wireless air quality table sensor + temperature and humidity



Desk Occupancy Monitoring

With the growing cost of office space there has never been a more pressing need to manage office space. It is important to know how desks are being utilised and to allocate desks.

By placing a wireless PIR detector under a desk an employee can be picked up and logged sitting at their desk. If people are Hot Desking then desk space can be monitored for booking and allocation purposes. It can also be used to increase levels of fresh air depending upon how many people are sat in a certain area.



Wireless motion sensor with battery
FB55B-wg

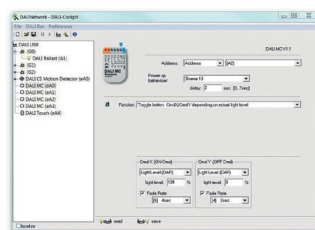




Lighting Control

In modern offices the use of DALI is widespread, but not exclusive. However it is best to use an Open Protocol solution like EnOcean or DALI so the future life of the installation is ensured. Eltako has a range of DALI controllers as well as a gateway to link its range of EnOcean Wireless devices to the DALI network giving you the best of both worlds. We also link to third party commercial controllers giving the user extensive access to data and control of the building. For example CO₂, humidity and temperature levels can be monitored and recorded as well as be controlled so they stay in prescribed settings.

An increasing number of 3rd party controllers have EnOcean on-board, which enables designers to utilize the numerous options available from Eltako to read and gather data from out devices like temperature, humidity, CO₂, VOC, window /door contacts, brightness and desk occupancy.



Software to commission DALI systems and monitor DALI bus communication.
DALI Cockpit and DALI-Monitor



DALI gateway
FDG14



DALI gateway
FDG71L



DALI Lighting Control

Eltako are members of the DALI Alliance and have a wide range of DALI lighting control products. Using the Eltako DALI – EnOcean gateway allows the Eltako EnOcean wireless and battery less switches to be incorporated in DALI lighting control projects. This concept offers many advantages including being able to put wireless, kinetic switches wherever you want, on the wall on a desk and be able to move them easily if required. It means that control wires do not have to be installed to the switches which save installation cost but also make them inherently safe.

Contact Eltako for more details!



1 channel DALI LED dimmer for luminaire installation and flush-mounted box

DL-1CH-8A-DC12+

1 channel DALI LED dimmer for ceiling installation

DL-1CH-16A-DC12+





Wireless Access Points and Gateways

Eltako wireless devices in the office and commercial sector.

A Building Control System is a key element of any modern commercial building. It is necessary to control, monitor and report condition, such as lighting, temperature, CO² levels, desk occupancy. Eltako offer a wide range of smart wireless monitoring and control devices for integrators to design and develop a smart building solution.

Often Wireless Access Points (WAP) are installed as part of a commercial building. These can now be configured to be EnOcean compatible and are available from EnOcean member suppliers. These WAP's then become the smart building network around the building bringing together all the configured wireless devices. Then readings or required changes to parameters setting can be accessed via a configured tablet or laptop.

Gateways for wireless devices are specifically designed to link EnOcean compatible devices together. This data can be displayed and reported like room temperatures, CO² levels, are windows open or closed, blind positions, desk occupancy, and much more. Also, they can be configured to control areas from the interface, so change temperatures on a room or turn off lighting. This is usually done through customised screens representing the room in question.

Because the system is essentially wireless, changes to office layouts can be carried out quickly and simply. It also means that new devices can be added, like an extra switch with the minimum of effort and disruption.





FMHIW-wg/rot
Mini handheld transmitter
for calling systems

Assisted Working - For those who would benefit from technology in the work place.

Assisted living is often discussed but it is often overlooked that wireless technology can be of help to those colleagues who need assistance in the workplace. Some of these are obvious like having accessible toilet facilities with call/alarm systems built into them. In offices, however where is the alarm routed to? Many companies today do not have a fixed receptionist, so the nominated responder may vary during the working day. These and other requirements can be found with Eltako as part of an integrated solution for all staff members now and into the future.

Other assistance can be given by rise and fall desks that operate at the push or a button, lights and blinds operated by buttons located at the correct height or fitted on to the desk. Wireless buttons can be fitted where you like.



FZS65-wg
Wireless pull switch



Save energy, reduce costs, preserve the environment

The Eltako Wireless Building also offers Smart Metering – genuine energy management that ranges from a cost-effective solution for any office or commercial building.

The electrical supplies in office and public buildings not only need to be metered at the main incomer but also sub metering in the various parts of the building for monitoring or billing purposes.

Consumption figures are captured by the Building Wireless system and displayed on indicators or by software. A nominated person can actively intervene to control consumption at any time. This shows where power is being wasted so that more effective controls can be introduced and save energy.

Optimising electricity consumption in this way not only makes enormous savings, it also helps preserve the environment at the same time.



FEA65D-wg
Wireless energy
consumption indicator
with display



WSZ15DE-32A
Single-phase energy
meter, without approval



WSZ15D-32A
Single-phase energy
meter, MID approval



DSZ14DRS-3x80A
RS485 bus three-phase
energy meter
with MID approval



WSZ110CEE-16A MID
Plug-in single phase
energy meter



Designing and integrating a smart building with Eltako wireless building controls is quite straight forward with the correct planning. Eltako wireless products work on the Open Protocol EnOcean Alliance frequency of 868 MHz and there is a huge range of devices available in our range.

Firstly, you need to decide on what functions are required in the property, for example lights to be switched or dimmed. How are the lights to be grouped? Other options as shown in this brochure include heating, will it be radiators or under-floor heating, automated shading, blinds or curtains, AC or MVHR? The next consideration is products, for this you need to decide on a centralised or decentralised approach. The factors, which normally decide this are, is the project a new build or retrofit? With new build the decision is normally a centralised approach using a DIN rail mounted enclosure to house the devices. So, they are centrally located and easy to access. The other option is a decentralised approach where smaller discreet devices are mounted behind the lights or in back boxes, which in existing buildings makes installation easier. This is how Eltako gives you more options for your project and makes it as economic as possible. Many devices are completely wire free, like our switches and PIR's. Other devices like our dimming actuators need to be connected to the lighting circuit but are controlled wirelessly. We are happy to help with product selection, so you get the best solution for your project.



PLANNING THE SYSTEM

The planning of the system requirements is essential, but changes can be incorporated at any time due to the flexible nature of the products.



MAINTENANCE

Due to the batteryless EnOcean technology the system is very low-maintenance. Substantial costs and maintenance effort can be saved.



ENCODING

Absolute security and safety – due to the encoded signal transmission of the wireless building.

Designing an Eltako controlled office. We are here to help

Consideration needs to be given to the location of devices because of wireless range, which in open space is around 30 m, but walls and floors may reduce range, again we are happy to advise and offer solutions, like signal boosters or product location.

Commissioning the system is straight forward and requires no special tools. The devices are taught to recognise each other. So, for example a light switch in a room is taught wirelessly to recognise the lights connected to the actuator in that room (switching or dimming) or a thermostat in a room is taught to control the radiator valve actuators in that room. You may have a central off light switch near the main exist so all (or most) the lights in the building are turned off. So, this would be linked to all the lighting actuators, it could also turn the heating down to a lower setting. These are just a couple of examples, Eltako offers much more. The whole building can be monitored and controlled from your smart device at home or abroad.

Another great advantage of the Eltako wireless control system is the ease of making changes and modifications. You might want to change a light scene or add a new feature like blind actuators. As your circumstance's changes Eltako smart controls changes with it. Also, with changes in technology Eltako is there always developing new products and software, so your system can always be updated and improved.

The devices only transmit data when required, the frequency output is around 0.01 watt (a smartphone products around 0.25 to 1 watt). Your security is paramount, and all signals transmitted are encoded. So you are safe in the knowledge that energy is only being used when it has to be to giving you the safe and comfortable environment you want.



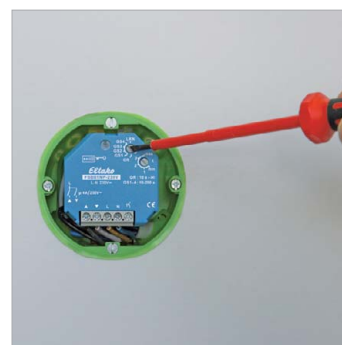
PRICE AND COSTS

It's amazing but the costs for a wireless installation are comparable with a conventional standard installation - with increased comfort!



CENTRALISED SYSTEM

When selecting a centralised approach, devices will be mounted in a suitably sized DIN rail mounting enclosure. The picture shows our Series 14 devices being fitted with especially designed jumpers instead of cross-link wiring which simpler and neater.



DECENTRALISED SYSTEM.

Designed mainly for retrofit work in a building these devices will be installed nearer to the devices, for example behind the light fitting in the ceiling and linked with a wireless switch. This is a great option for simple installations for an extension or refurbishment project.

DO YOU HAVE ANY QUESTIONS? WE HAVE THE ANSWERS FOR YOU.



Picture credits: Title: © mark; p. 6 © upixar; p. 8 © eiroce; p. 12 © who is danny; p. 13 + 15 © 4th Life Photography;
p. 14 © Rashchekayev; p. 16 © seventyfour; p. 18 © HBS, Composing Eltako - AdobeStock.com; p. 9 © christian hillebrand - fotolia.de