



**Quick Start Guide**  
**Eltako GFVS-Touch IV**

## Contents

<b>1. Scope of supply .....</b>	<b>4</b>
<b>2. Technical data .....</b>	<b>4</b>
<b>3. Connections on the Eltako GFVS-Touch IV .....</b>	<b>5</b>
<b>4. First start-up .....</b>	<b>7</b>
4.1.1 <i>Operation .....</i>	8
4.1.2 <i>Right mouse button .....</i>	8
4.1.3 <i>Screen keyboard .....</i>	8
4.1.4 <i>Volume control .....</i>	9
4.2 <i>Menu .....</i>	9
4.2.1 <i>Eltako GFVS 4.0 software .....</i>	9
4.2.2 <i>PCT 14 .....</i>	9
4.2.3 <i>GFVS 4.0 settings .....</i>	9
4.2.4 <i>BSC-BAP finder .....</i>	11
4.2.5 <i>Remote settings .....</i>	11
4.2.7 <i>Date/time .....</i>	12
4.2.8 <i>Select language .....</i>	12
4.3 <i>Presettings .....</i>	13
4.3.1 <i>License .....</i>	13
4.3.2 <i>Database .....</i>	13
4.3.3 <i>Network .....</i>	13
<b>5. Eltako quickcon® technology .....</b>	<b>15</b>
<b>6. System tools .....</b>	<b>21</b>
6.1 <i>GFVS tools .....</i>	21
6.1.1 <i>Save, restore or delete database .....</i>	22
6.1.2 <i>System backup .....</i>	24
6.1.3 <i>Delete license in case of license problems .....</i>	26
6.1.4 <i>Restore factory settings .....</i>	27
6.1.5 <i>GFVS settings .....</i>	29
6.1.6 <i>GFVS update .....</i>	30
6.2 <i>BAP Finder .....</i>	30
6.3 <i>CodeMeter .....</i>	31
6.4 <i>Change web code .....</i>	31
6.5 <i>Shuttle tools .....</i>	31
<b>7. System settings .....</b>	<b>32</b>
7.1 <i>Network settings .....</i>	32
7.2 <i>Remote settings .....</i>	33
7.3 <i>Date/time .....</i>	33

7.4	Search monitor.....	34
7.5	Display resolution.....	34
7.6	OSD keyboard .....	35
7.7	Technical Support (TeamViewer) .....	35
7.8	Data transfer.....	36
8.	Switch off Eltako GFVS-Touch IV .....	37
9.	Notes on continuous operation.....	37
10.	Conformity.....	37
11.	Technical Support.....	38

## General

Please read these instructions carefully to avoid problems when using the product. Eltako GmbH will not assume any liability for defects arising from the improper use or non-observance of the instructions for use (incorrect installation, incorrect start-up, maloperation, etc.).

The intended use of the GFVS-Touch IV with LAN or WLAN communication is the visualisation of sensor information, actuator switch states and meter consumption data and the control of actuators.

## 1. Scope of supply

- Eltako GFVS-Touch IV
- External power supply unit
- Ethernet connecting cable 2 m RJ45
- Resources CD
- Eltako GFVS 4.0 software packet incl. license key
- Quick start guide (this manual)
- Stylus pen (on display, see Section 3.17)

## 2. Technical data

Processor:	Intel® Celeron 3865U Dual Core 2 x 1.8 GHz
RAM:	4 GB RAM
Hard disk drive:	120 GB SSD
Display:	39.6 cm (15.6") Touchscreen (1366 x 768)
Graphics function:	Intel® HD Graphics Dynamic Video Memory Technology
Sound card:	IDT92HD81 Audio Codec
Interfaces:	1 x VGA video output 1 x LAN (Gigabit Ethernet) 2 x USB 3.0 4 x USB 2.0 1 x HDMI 1 x WLAN 802.11 b/g/n 1 x line out 1 x mic in
Other components integrated:	FAM-USB 2.0 Megapixel Webcam 2 x 2 W loudspeakers VESA holder - Compatible with 100x100 mm
Software and applications:	Eltako GFVS 4.0 PCT 14 software Backup and restore function

### 3. Connections on the Eltako GFVS-Touch IV

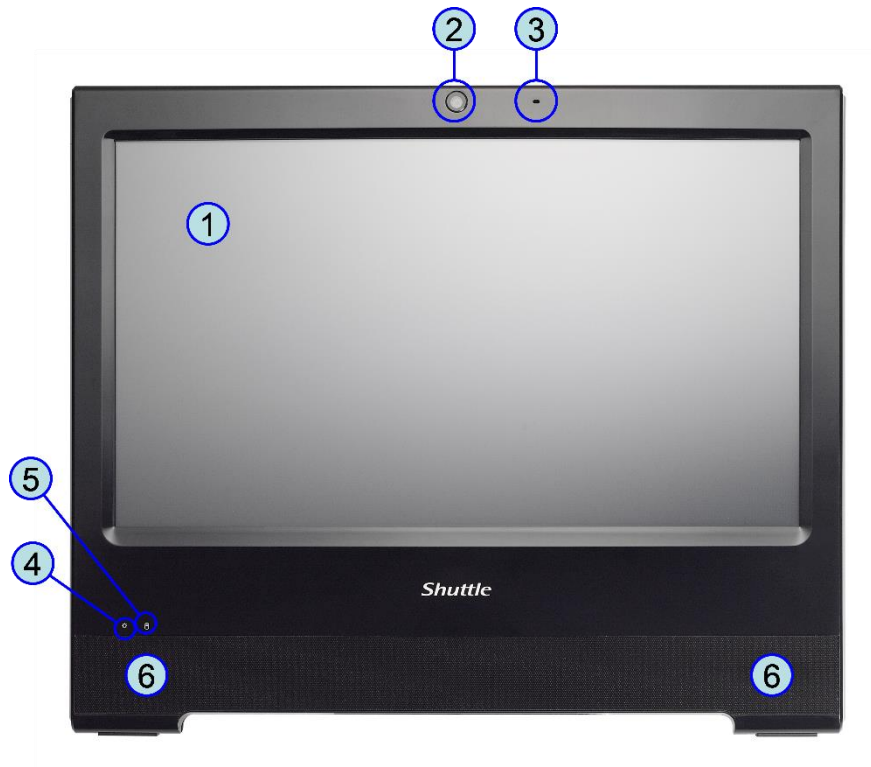


Figure 1: Front view

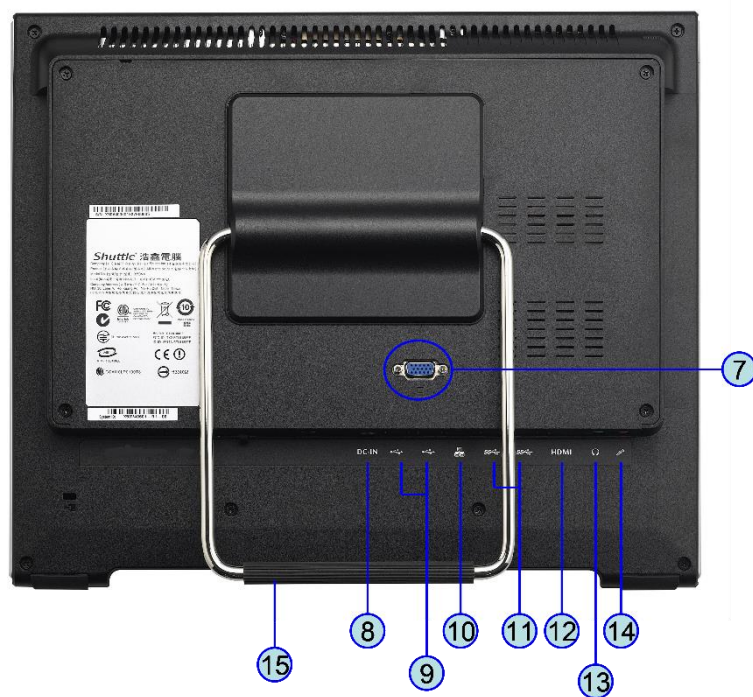
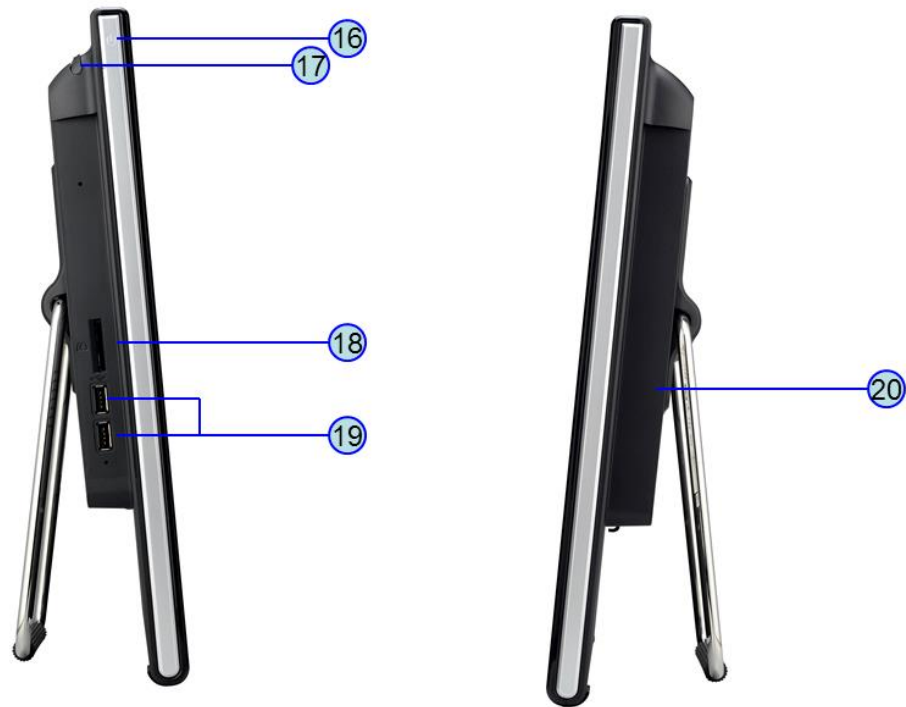


Figure 2: Rear



*Figure 3: Connections left/right*

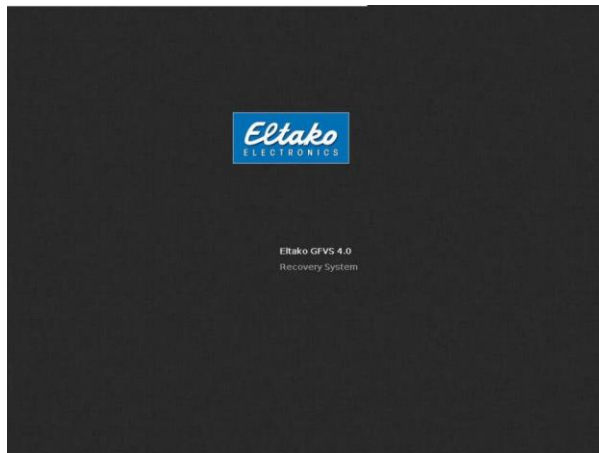
- 1 Touchscreen LCD display
- 2 Webcam
- 3 Microphone
- 4 LED power indicator
- 5 Hard disk LED indicator
- 6 Stereo loudspeakers
- 7 VGA output
- 8 Power supply input
- 9 USB 2.0 ports
- 10 Network port
- 11 USB 3.0 ports
- 12 HDMI port
- 13 Headphones/line out socket
- 14 Microphone input
- 15 Stand/carrier handle
- 16 On/Off button
- 17 Touchscreen stylus pen
- 18 SD card reader
- 19 USB 2.0 ports
- 20 Connection prewired for EnOcean antenna

## 4. First start-up

### Start-up

- Plug the external power supply unit into a 230 V socket and connect it to the GFVS-Touch IV. The blue LED indicates power supply.
- You can connect a keyboard and mouse to the USB ports to configure the GFVS software.
- Alternatively, you can connect a PC via remote control (VNC) via network to the Eltako GFVS-Touch IV and carry out the configuration.
- We advise you to issue a fixed IP address to use the cross-over cable, see menu option 4.2.6.

Then you can switch on the Eltako GFVS-Touch IV. During the run-up, you will see the dialog below:



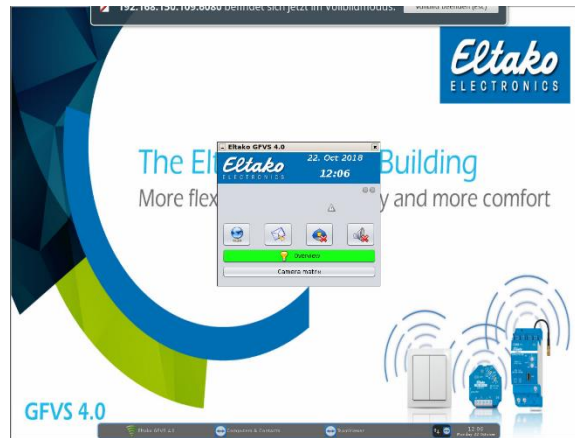
*Figure 4: Start view*

As required, you can switch to recovery mode to reset the system to factory settings. If you make no subsequent input, the Eltako GFVS-Touch IV restarts after 10 seconds. The Eltako GFVS 4.0 software is already installed and starts automatically after switch-on:



*Figure 5: Start the Eltako GFVS 4.0 software*

The Eltako GFVS 4.0 software starts.



**Figure 6: The Eltako GFVS 4.0 software starts**

A task bar appears at the bottom of the screen. Icons are displayed for network connection as well as the date and time.

## 4.1.1 Operation

The touch screen can be operated just by finger pressure without a mouse or keyboard. At the top left on the enclosure there is a stylus pen to make more detailed inputs. A virtual keyboard can be opened using the menu. Press an object for longer to open the Context menu.

## 4.1.2 Right mouse button

If you press the screen for longer, the system recognises it as a right-click. This opens the GFVS menu. Alternatively, click on the time and date section and then on the desktop. This also opens the GFVS menu.

## 4.1.3 Screen keyboard

The on-screen keyboard opens from "Menu - System settings - OSD keyboard".



**Figure 7: OSD keyboard**



#### 4.1.4 Volume control

Right-click on the time and date section to open the volume control.

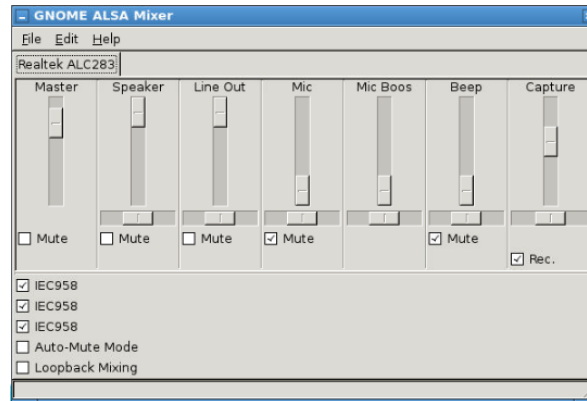


Figure 8: Volume control

## 4.2 Menu

Open the GFVS menu by right-clicking on the background.

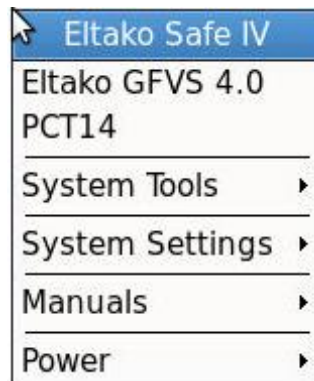


Figure 9: Eltako GFVS-Touch IV menu

#### 4.2.1 Eltako GFVS 4.0 software

If required, the Eltako GFVS 4.0 software can be started by clicking the menu option “GFVS 4.0”. Open a detailed instruction manual using “Manuals - Eltako GFVS 4.0 manual”.

#### 4.2.2 PCT 14

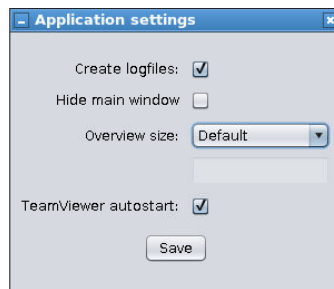
The PCT 14 (version 7.6) is integrated In the GFVS Version 4.0 and higher.

#### 4.2.3 GFVS 4.0 settings

The option “Create log files” creates log files which track any errors and provide assistance to Technical Support.

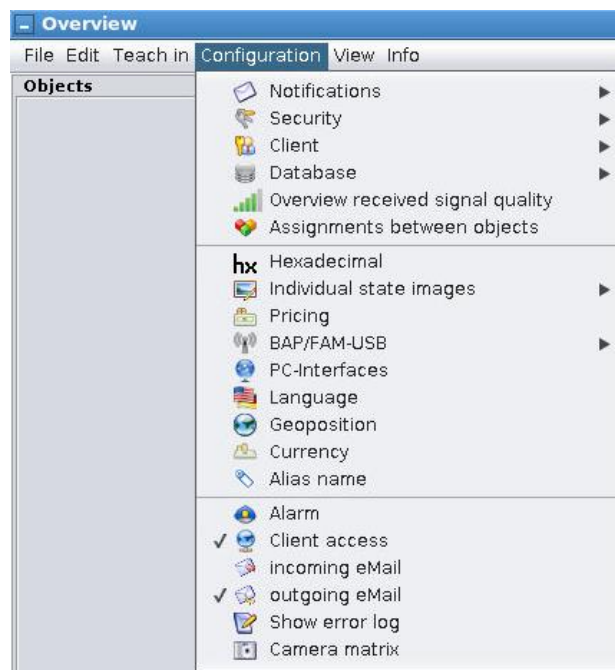
Adapt the size of the overview window to the connected PC client using “Overview size”.

“TeamViewer Autostart” connects the TeamViewer to the Autostart routine. A reboot is needed to accept the setting.



**Figure 10: Program settings**

“Hide main window” starts the Eltako GFVS 4.0 software with the overview window. The buttons in the main window are integrated in the “Configuration” menu.



**Figure 11: Configuration menu**

#### 4.2.4 BSC-BAP finder

The BSC-BAP finder is for configuring TF-IP-Con, BAP, BIER or IPG170(P) and is opened with menu option "System tools - BSC-BAP Finder". Use the menu option "Manuals - BSC-BAP Finder" to open a detailed instruction manual.

#### 4.2.5 Remote settings

A device-specific password was set in the as-delivered state. It is located on the rear of the device. It can be overwritten by entering a new password.



*Figure 12: Remote settings*

When the password is reset, the MAC address of the active network unit is set.



*Figure 13: MAC address of Ethernet interface*

**!** **Note:** Change the preconfigured password immediately or deactivate the service so that no unauthorised person can connect to the system.

#### 4.2.6 Network settings

The configuration of network cards can be adapted using “System settings - Network settings”.

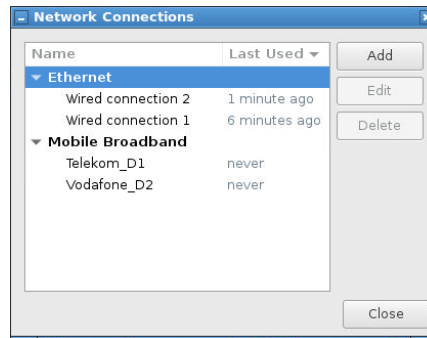


Figure 14: Network settings

The LAN interface is set up to operate in a network with DHCP.

#### 4.2.7 Date/time

You can change the date and time in the dialog under the menu option “System settings - Date/time”.

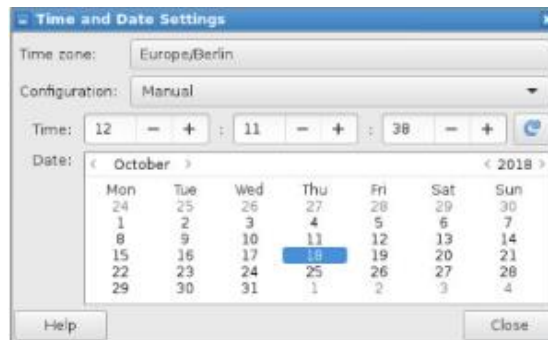


Figure 15: Time and date settings

#### 4.2.8 Select language

Change the language by using the menu option “System settings - Select language”. The GFVS must be connected to change the language.

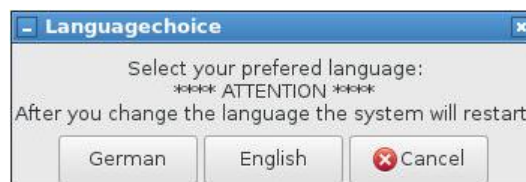


Figure 16: Language selection

## 4.3 Presettings

### 4.3.1 License

The Eltako GFVS-Touch is delivered with an activated Eltako GFVS 4.0 license. If it is necessary to carry out a repeat activation, an Eltako GFVS 4.0 license key is included. However, it must be released by Eltako before activation. Contact Technical Support for this.

### 4.3.2 Database

PostgreSQL database is set up for data management.

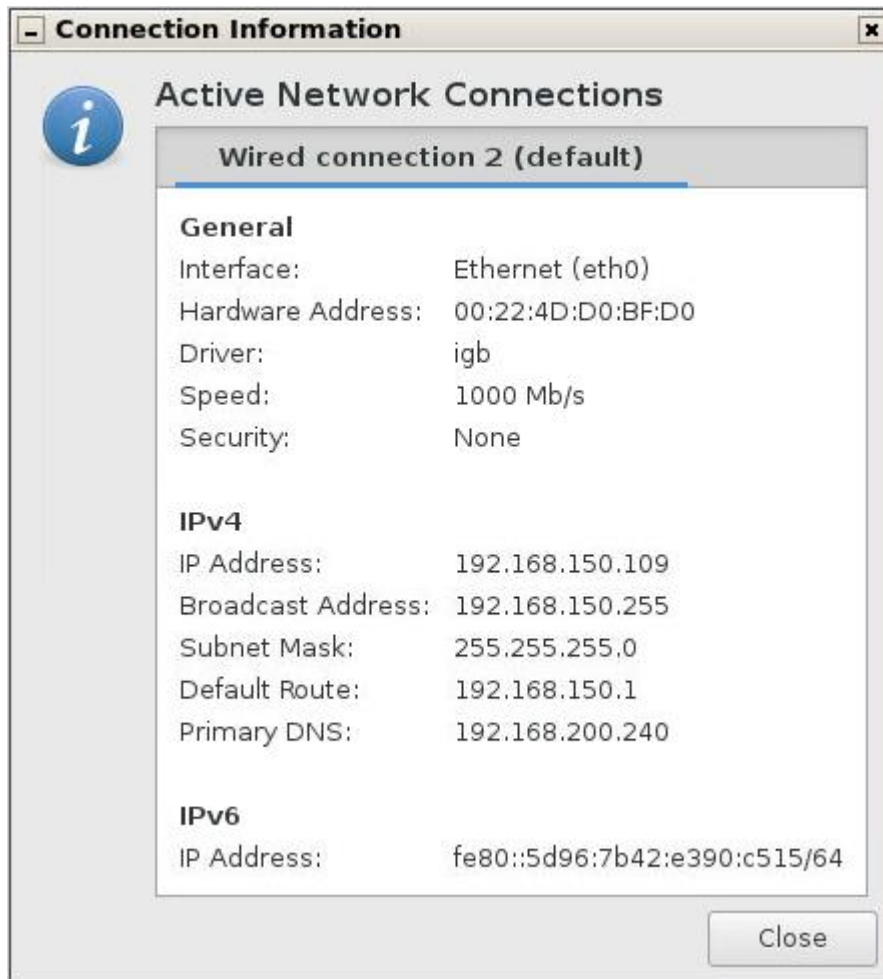
### 4.3.3 Network

The LAN interface is set up to operate in a network with DHCP.



**Figure 17: Network connection**

Go to [Link information] and an information window appears containing all active interface interfaces and their settings.



*Figure 18: Connection information*

## 5. Eltako quickcon® technology

This allows the simple connection of an Eltako GFVS Server to a Mobile Client without any knowledge of how to handle IP address translations (e.g. DynDNS) or port blocking.

**! Important:** Using the app creates data traffic which may entail additional costs independent of the mobile radio contract.

Download the Eltako GFVS Tablet or the Eltako GFVS Mobile Client from the App Shop of your mobile radio system (iPhone->iTunes, Android -> Google Play) and install it.

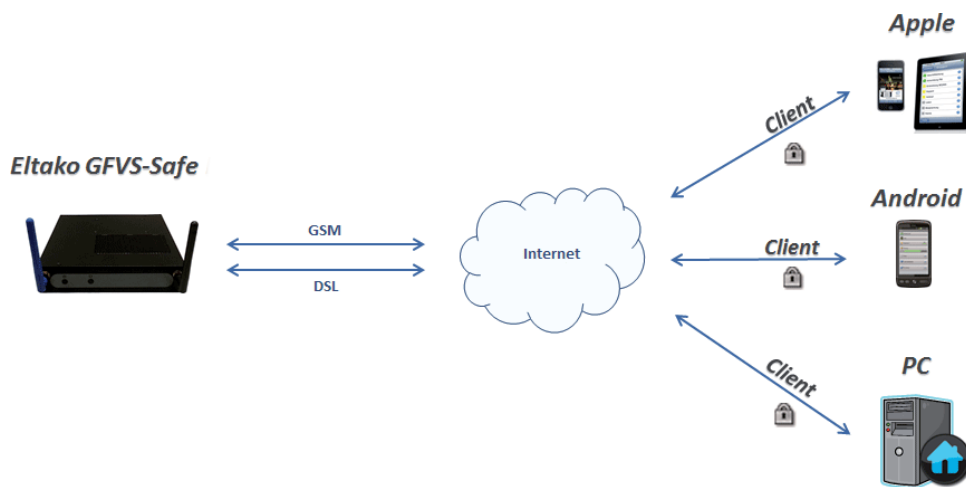


Figure 19: Use of encrypted links without port blocking or IP address translation

### Configuration of Mobile Client and Eltako GFVS Server

First create a profile in the Eltako GFVS 4.0 software using “Configuration - Client - Profile manager”. This defines the rights of the Mobile Client in the Eltako GFVS 4.0 software.

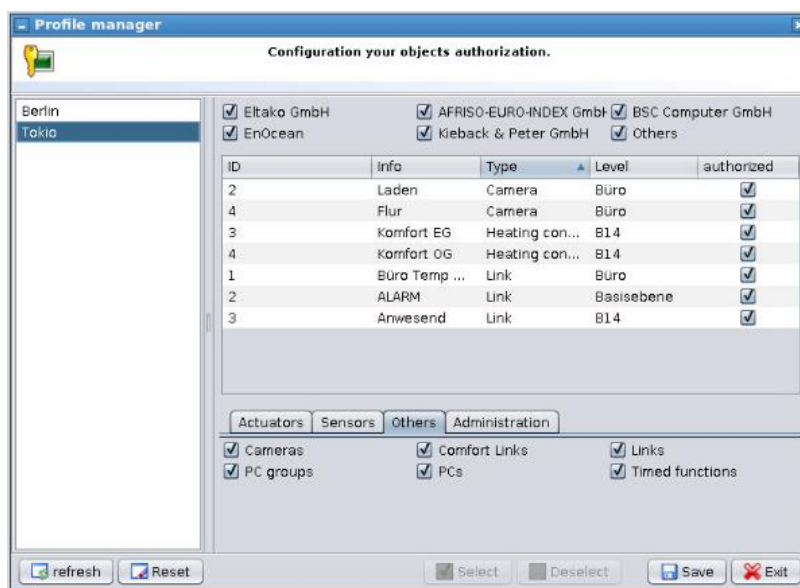
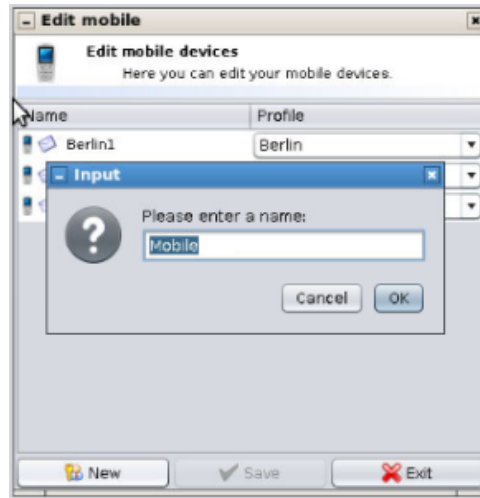


Figure 20: Profile manager

Then create a new device in the Eltako GFVS 4.0 software using “Configuration - Client - Eltako GFVS 4.0 Mobile”.



*Figure 21: Create Mobile Client*

## GFVS Client

Then assign the user to the corresponding access profile and save your settings. Also enter the name of the smartphone or tablet.



*Figure 22: Name Mobile Client*

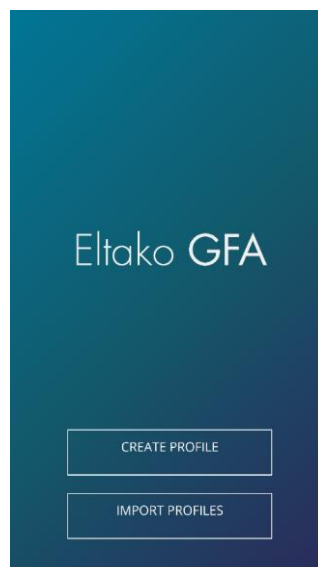
Right-click on the client set up and then on “Show QR code”.





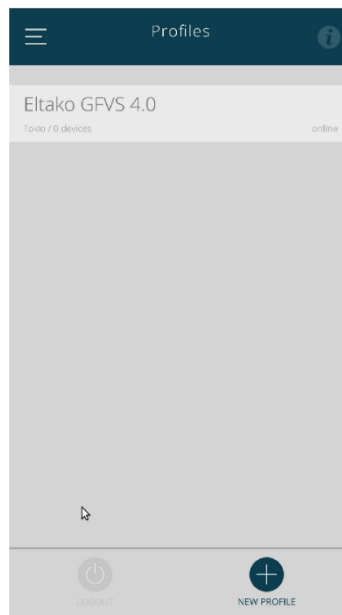
*Figure 23: Assign Mobile profile*

Open the GFA2 app on the appropriate device and go to “Create profile”.

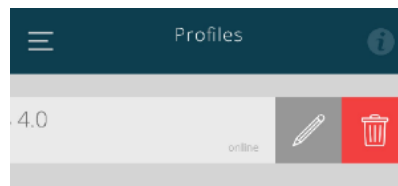


*Figure 24: Create a profile*

Drag the bright area of the display over the displayed QR code of the GFVS server. As soon as the GFA2 recognises the QR code, the screen switches to the access profiles. Swipe left on the new access profile set up to access the menu and rename the profile.

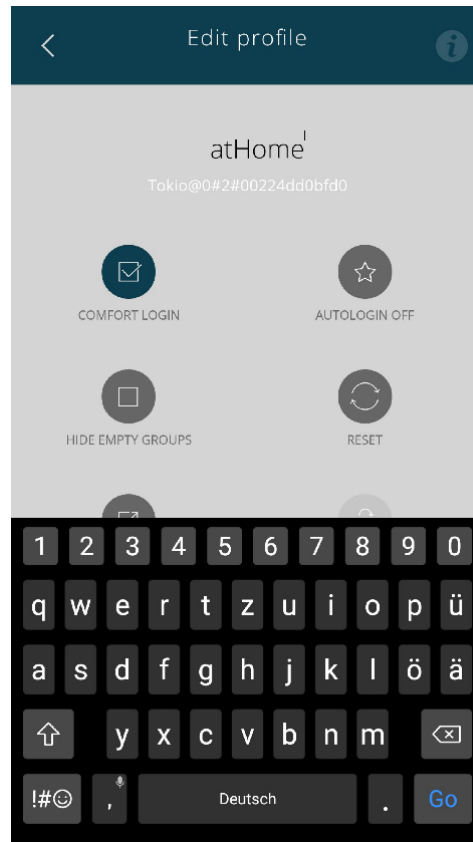


**Figure 25: Create a profile**




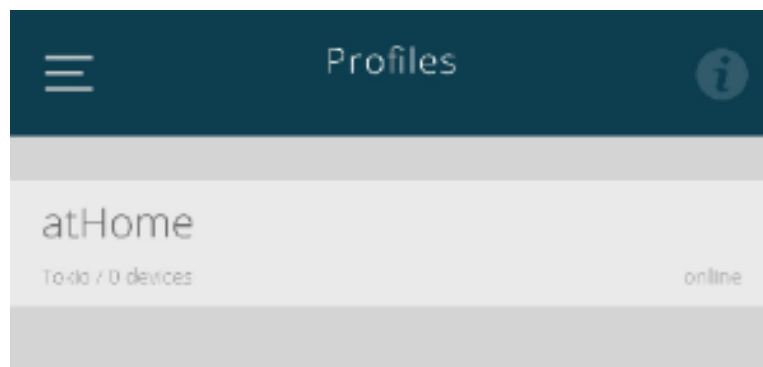
**Figure 26: Rename profile**

Highlight the “Eltako GFVS 4.0” text to rename the profile.



**Figure 27: Rename profile**

Click the icon  to return to the profile overview.



**Figure 28: Select Profile**

Access your GFVS server by tapping the corresponding profile.



**Figure 29: Server access**

## 6. System tools

### 6.1 GFVS tools

Right-click on the background to open the menu. Use “System tools - GFVS tools” to access a dialog in which you can save or restore the system and/or the database.

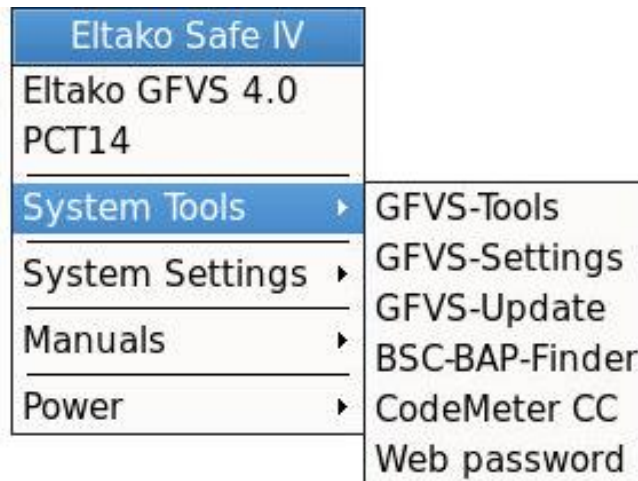


Figure 30: System tools

The following dialog appears:



Figure 31: Eltako GFVS System Tools

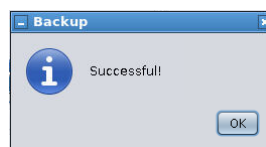
### 6.1.1 Save, restore or delete database

To save your database, click “Save database”. A grey bar appears at the bottom of the window.



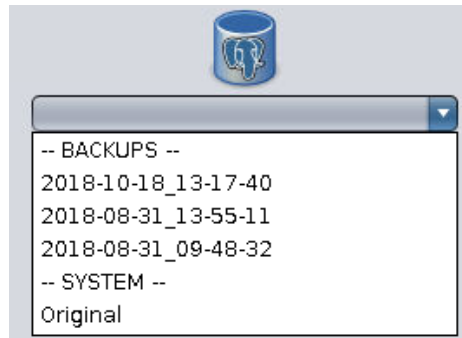
*Figure 32: Save database*

As soon as the database is saved, a new dialog appears. Confirm this by clicking “OK”.



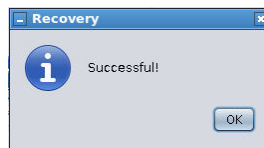
*Figure 33: Save database successful*

If you want to restore an older database, select the required database from the dropdown box. Alternatively, select a database with the as-delivered state of the Eltako GFVS-Touch IV.



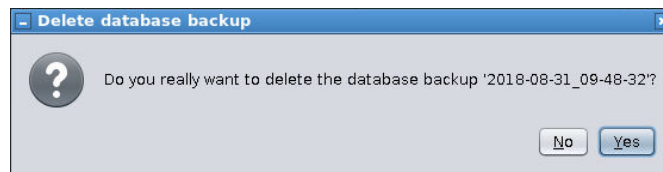
**Figure 34: Restore database**

After you select a database, press the button “Restore database”.



**Figure 35: Restore successful**

The dialog confirms that the database was successfully restored. Click “OK” to delete a backup of the database, select the database from the dropdown box and then confirm by clicking the button “Delete database backup”:



**Figure 36: Delete backup**

The dialog below asks you whether you are sure you want to delete the database. Confirm with “Yes” to delete the selected database or select “No” to cancel the process.

### 6.1.2 System backup

Click the button “Save system” and your system is saved.



Figure 37: Save system

The following dialog appears:



If the backup was successful, another dialog appears. End this dialog by clicking “OK”.

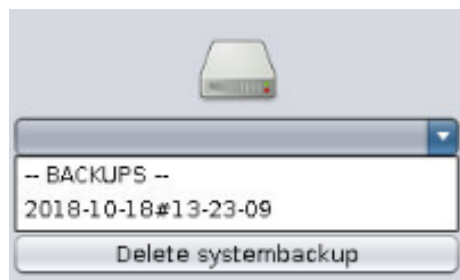
The dropdown box “Maximum number of system backups” indicates how many backups of your system are saved. Use the menu option “Restore system backup” to play back an earlier backup.



The backup contains the system state at the time of the backup. If changes were made in the GFVS since that time, the state of the database required must be played back.



*Figure 39: Restore system backup*



*Figure 40: Delete backup*

**i Note:** Make sure that the Eltako GFVS-Touch IV is not unplugged from the power source during the playback process.

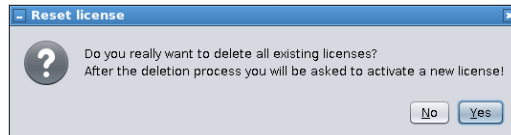
Use 'Delete system backup' to remove backups which are no longer necessary.

### 6.1.3 Delete license in case of license problems

Caution: Only execute this process on the instruction of Support. The license must first be released for repeat activation.

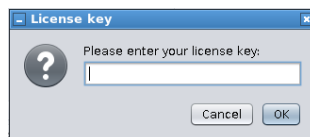
The button “Delete license” deletes your Eltako GFVS 4.0 license. Click on it to open a window to enter the password. Password 0000

Only use this option on the instruction of Eltako GFVS 4.0 Support. Please note that you cannot use the Eltako GFVS 4.0 software without a valid license. A web access is also required to activate the new license.



*Figure 41: Delete license*

Confirm the deletion process by pressing “Yes”. Then enter a new license in the next dialog to activate it.



*Figure 42: Enter new license key*

#### 6.1.4 Restore factory settings



Figure 43: Enter new license key

The system is reset to the as-delivered state. This is only necessary in exceptional cases.

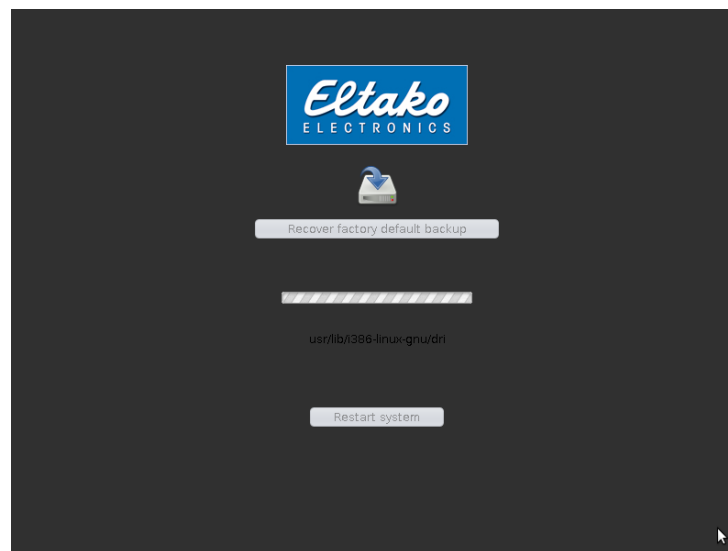


Figure 44: Restore factory settings



*Figure 45: Restore factory settings*

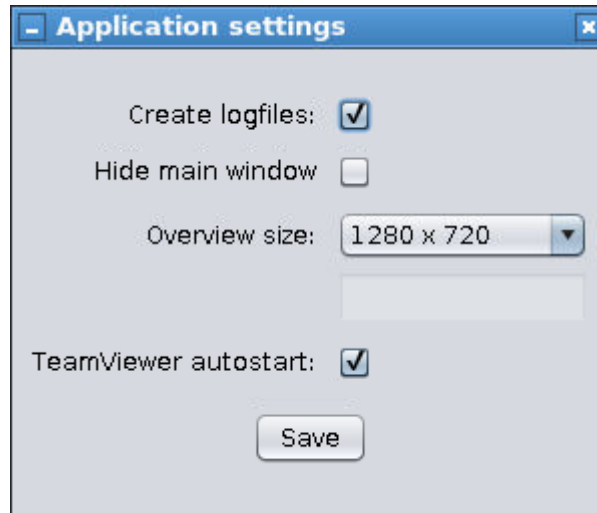
When you confirm the repeat question, the system reboots and executes the restore process.



*Figure 46: Restore process*

### 6.1.5 GFVS settings

Additional settings can be made to the GFVS server under the menu option “GFVS Settings”.



*Figure 47: Program settings*

- **Create log files:** Creates log files which log the behaviour of the GFVS software.
- **Hide main window:** After activating the menu option, the GFVS software starts without the small start window every time. The start procedure goes directly to the overview window. The setting options of the start window are then displayed in the overview under [Configuration].
- **Overview window size:** If one or more PC clients are in use, you can set a standard size for the overview window here. The icons and controls are positioned at the same spot on each client.
- **TeamViewer autostart:** When the function is activated, the system is started with TeamViewer every time.

**i Note:** It is not recommended to activate this function or leave it active if no support ticket exists or a support is pending.

## 6.1.6 GFVS update

Use this menu option to update the firmware in the Eltako GFVS-Touch IV or the Eltako GFVS 4.0 software. If there is an update for your system, confirm the window with “Yes”. Depending on the size of the update and the web access used, the procedure may take some time. Internet access is needed.

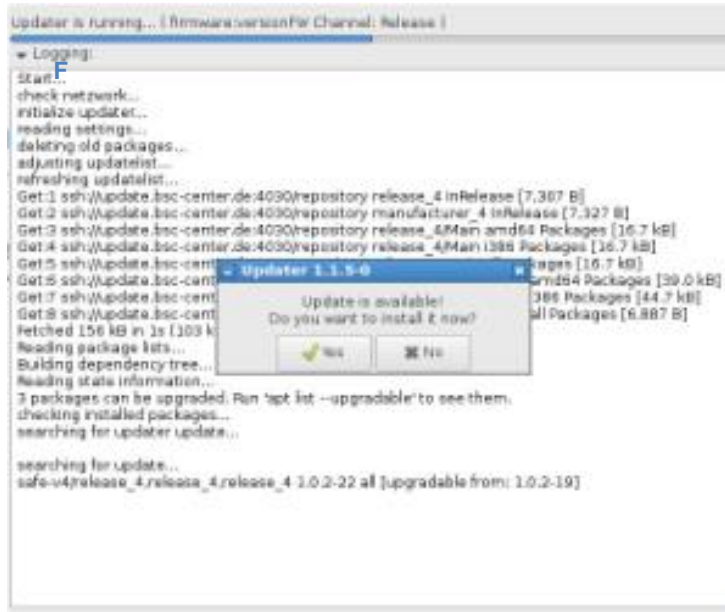


Figure 48: GFVS update

## 6.2 BAP Finder

The BAP-Finder software is for finding and configuring IPG-170 and TF-IP-Con. The software assists in network configuration. For more details please refer to the corresponding documentation.

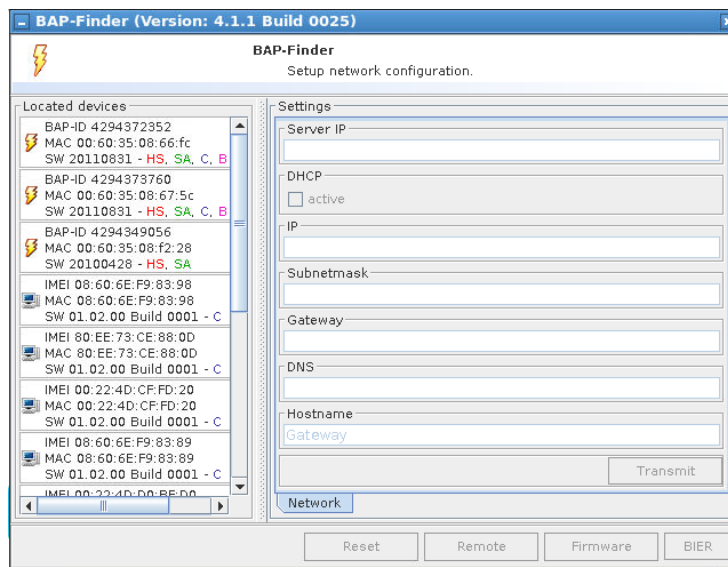


Figure 49: BAP Finder

### 6.3 CodeMeter

Settings in the Code Meter control centre are only carried out by Support.

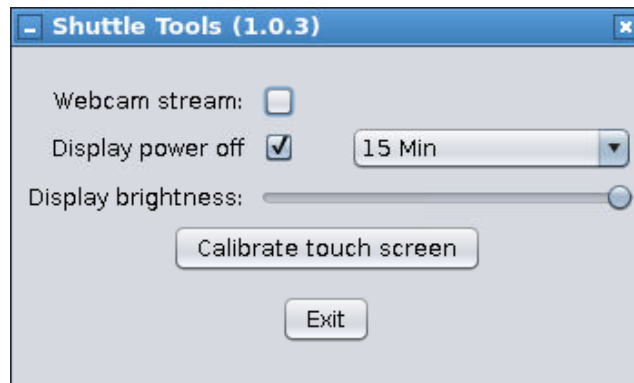
### 6.4 Change web code

Web access to the GFVS is activated by setting the web code. The website can be reached at “http://IP address” to upload/download files. The IP address of the GFVS server can be displayed in the network administrator.

### 6.5 Shuttle tools

System-specific settings can be made in the Shuttle Tools menu option.

1. You can activate the internal webcam. By default, the activation is cancelled when the system is rebooted and must be reactivated again.
2. Under the “Switch off display” option, enter the time at which the screen should change to sleep mode. Just touch the screen surface to wake it up again.
3. Use the slider to adapt the screen brightness to the surroundings.
4. If the position of the touch detected drifts too far away from the actual touch spot, recalibrate the screen.



*Figure 50: Shuttle tools*

## 7. System settings

Other settings can be carried out in the menu option "System settings".

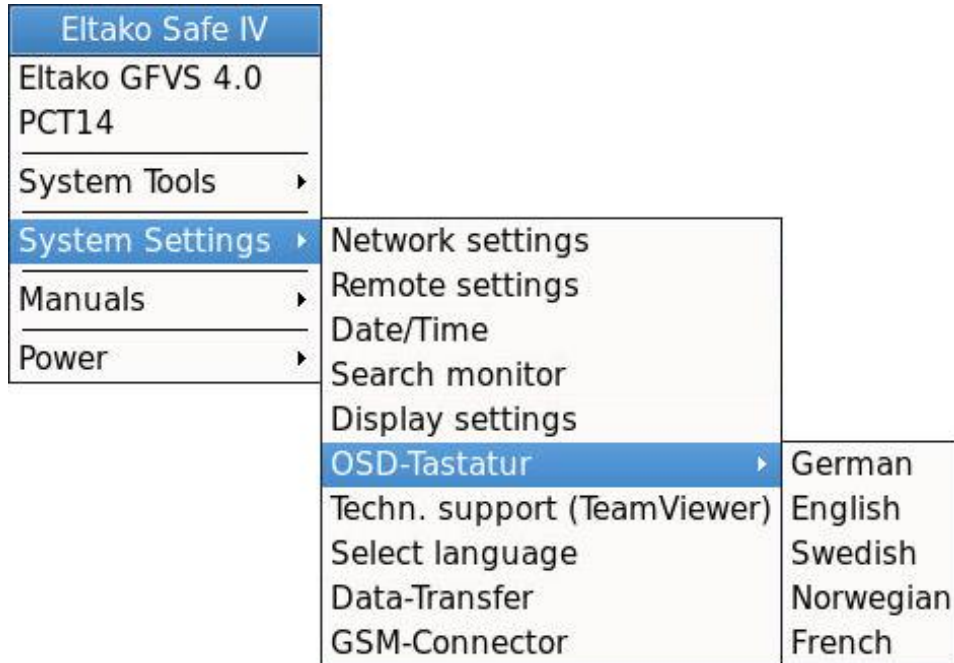


Figure 51: "System settings" menu

### 7.1 Network settings

Appropriate configurations can be carried out in the Network settings menu option.

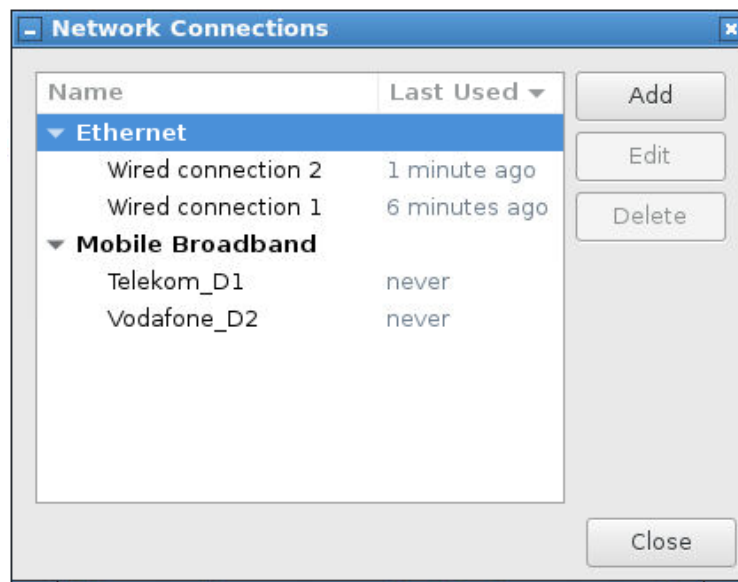
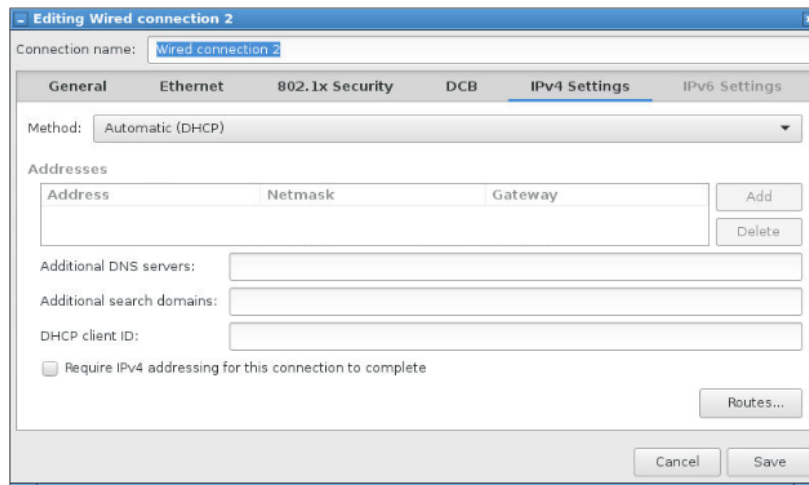


Figure 52: Network settings



Go to the associated network interface and carry out the configuration under [Edit].



**Figure 53: Edit network interface**

**Note:** We advise you to assign the server with a fixed IP address. However, make sure that the address is not outside the IP range of the local DHCP server.

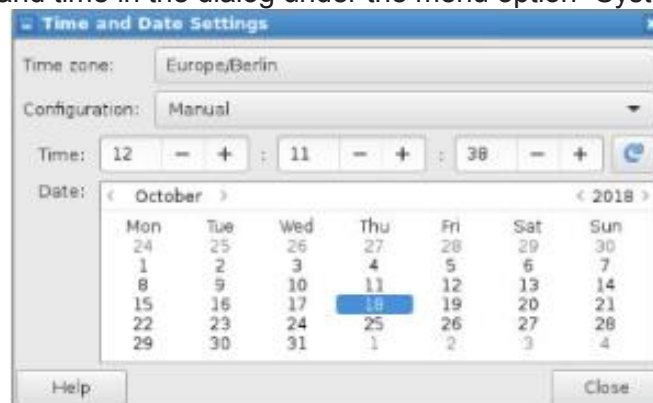
## 7.2 Remote settings

Access by VNC to the GFVS server is activated in the as-delivered state. The default password is located on the rear of the device.

**Note:** We urgently advise you to change this directly after start-up.

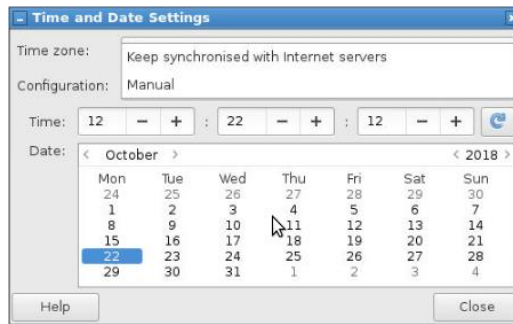
## 7.3 Date/time

You can change the date and time in the dialog under the menu option “System settings - Date/time”.



**Figure 54: Time and date settings**

Automatic clock synchronisation can be activated in the Configuration option.



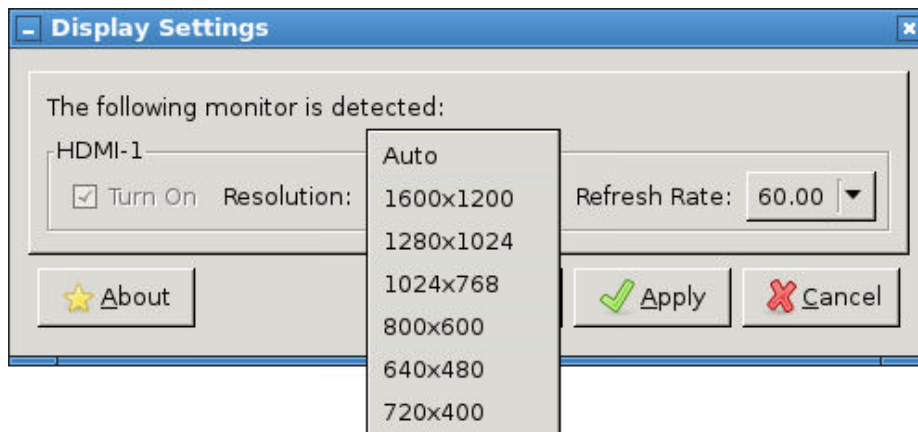
**Figure 55: Time and date settings**

## 7.4 Search monitor

If several monitors are connected to the GFVS server, you can define which the primary clock is with this menu option.

## 7.5 Display resolution

If there are problems with a monitor, the required resolution and refresh rate of the connected monitor can be set here.



**Figure 56: Display resolution**

## 7.6 OSD keyboard

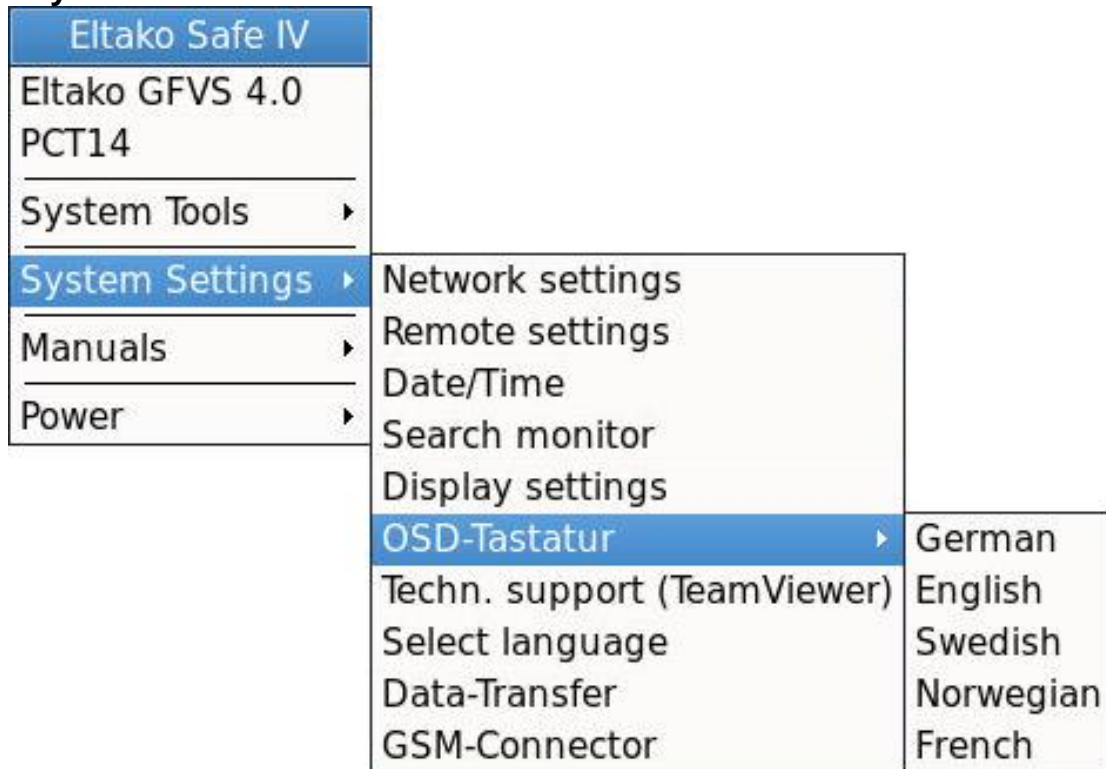


Figure 57: OSD keyboard settings

Country-specific keyboard assignments can be made here.

## 7.7 Technical Support (TeamViewer)

TeamViewer offers the possibility of remote access by Technical Support. First time access to the TeamViewer service

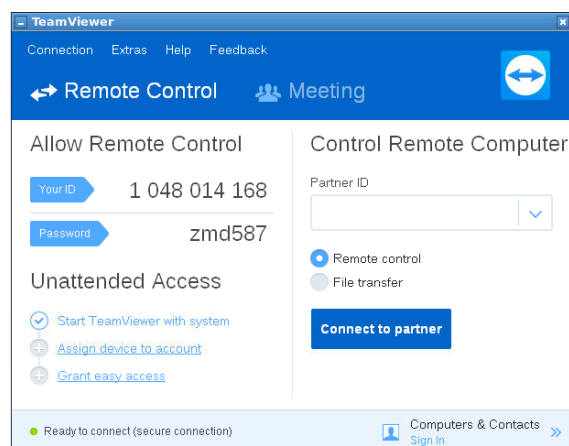


Figure 58: Team Viewer

## 7.8 Data transfer

If you want to use your own background images and user-defined icons in the Eltako GFVS 4.0 software, you can copy them from a USB stick to the Eltako GFVS-Touch IV.

**i Note:** The following folder structure must be set up on an empty USB stick: **/hc\_import/pictures/**. Otherwise, the images are not copied.



*Figure 59: Copy images and icons*

The menu option “System settings - Import-Export” opens the window “Data transmission”. Tick the checkbox in front of “Import directory” and then click the button “Import” to copy all the files from the folder on the USB stick to the hard disk. The “Delete” button deletes the import, export or log directory depending on whether the tick is set or not.

## 8. Switch off Eltako GFVS-Touch IV

Right-click on the background to open the “Power” menu.



Figure 60: “Power” menu

Here you can choose whether you want to start, restart or switch off the GFVS-Touch IV in Recovery Mode.

## 9. Notes on continuous operation

The Eltako GFVS-Touch IV is designed for 24/7 continuous operation. Conditions for continuous operation:

- Ambient temperature in operation: 5-35°C
- Air humidity in operation: 10-80% (non-condensing)
- Free air circulation in the surroundings of the GFVS-Touch IV
- Freely accessible air vents on the device

## 10. Conformity

Eltako GmbH hereby declares that the wireless system type GFVS-Touch IV complies with Directive 2014/53/EU. The full wording of the EU Declaration of Conformity is available at the following web address: [www.eltako.com](http://www.eltako.com)

## **11. Technical Support**

**For support, please contact:**

**Eltako GmbH**

**Hofener Strasse 54**

**70736 Fellbach**

**Germany**

**Product consulting and technical information:**

**Tel: +49 (0)711 943500-02**

**Email: [Technik-Beratung@eltako.de](mailto:Technik-Beratung@eltako.de)**

**Customer service and order processing**

**Tel: +49(0)711 94350001**

**Fax: +49(0)711 5183740**

**Email: [Kundenservice@eltako.de](mailto:Kundenservice@eltako.de)**