



Quick Start Guide Eltako GFVS-Safe IV



# **Quick Start Guide Eltako GFVS-Safe IV**



## Contents

<b>1</b>	<b>Scope of supply</b>	<b>4</b>
<b>2</b>	<b>Technical data</b>	<b>4</b>
<b>3</b>	<b>Connections on the Eltako GFVS-Safe IV</b>	<b>5</b>
<b>4</b>	<b>First start-up</b>	<b>6</b>
4.1	Start-up	6
4.2	Menu	7
4.2.1	Eltako GFVS 4.0 software	7
4.2.2	PCT 14	7
4.2.3	Select language	8
4.2.4	Network settings	8
4.2.5	Remote settings	8
4.2.6	BSC-BAP finder	9
4.2.7	GFVS 4.0 settings	9
4.3	Presettings	10
4.3.1	License	10
4.3.2	Database	10
4.3.3	Network	10
<b>5</b>	<b>Eltako quickcon® technology</b>	<b>11</b>
<b>6</b>	<b>System tools</b>	<b>17</b>
6.1	GFVS tools	17
6.1.1	Save, restore or delete database	18
6.1.2	System backup	20
6.1.3	Delete license in case of license problems	22
6.1.4	Restore factory settings	23
6.1.5	GFVS settings	25
6.1.6	GFVS update	26
6.2	Bap-Finder	26
6.3	Code Meter	27
6.4	Change web code	27
<b>7</b>	<b>System settings</b>	<b>27</b>
7.1	Network settings	28
7.2	Remote settings	28



## Quick Start Guide Eltako GFVS-Safe IV

7.3	Date/time.....	29
7.4	Search monitor.....	29
7.5	Display resolution.....	30
7.6	OSD keyboard .....	30
7.7	Technical Support (TeamViewer).....	31
7.8	Copy background images .....	31
<b>8</b>	<b>Switch off Eltako GFVS-Safe IV .....</b>	<b>32</b>
<b>9</b>	<b>Conformity .....</b>	<b>32</b>
<b>10</b>	<b>Technical Support .....</b>	<b>33</b>



## General

Please read these instructions carefully to avoid problems when using the product. Eltako GmbH will not assume any liability for defects arising from the improper use or non-observance of the instructions for use (incorrect installation, incorrect start-up, maloperation, etc.).

The intended use of the GFVS-Safe IV with LAN, WLAN and as required M2M communication is the visualisation of sensor information, actuator switch states and meter consumption data and the control of actuators.

## 1 Scope of supply

- Eltako GFVS-Safe IV
- External power supply unit
- 1 x Ethernet connecting cable 2 m RJ45
- Associated antenna
- Eltako GFVS 4.0 software packet incl. license key
- Quick start guide (this manual)

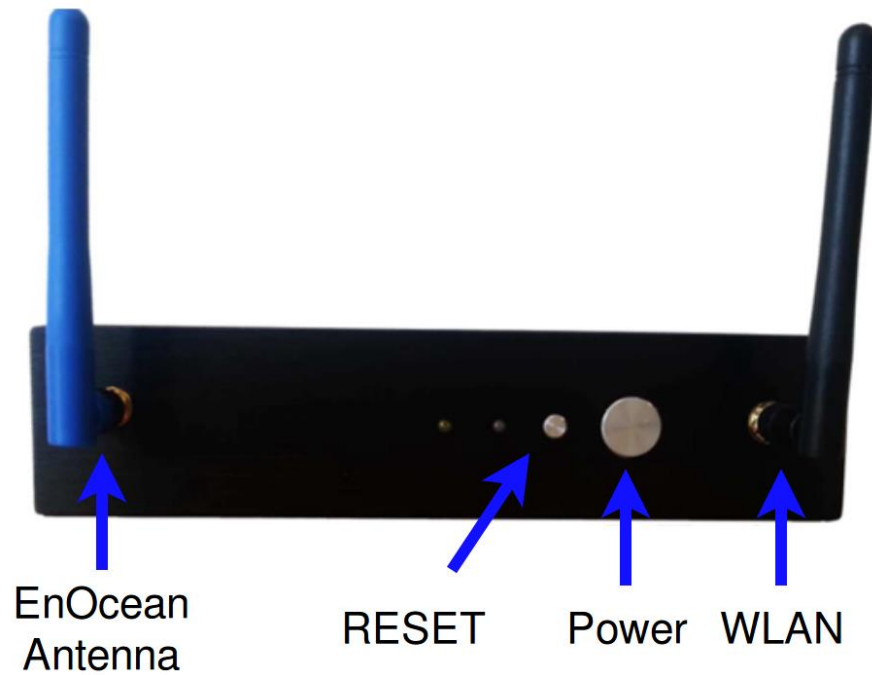
## 2 Technical data

Processor:	Intel® Atom™ J1900
RAM:	4 GB DDR3L
Hard Disk memory:	120 GB SSD
Graphic card:	Intel® HD Graphics
Interfaces:	1 x LAN RJ-45 Intel® 10/100/1000 1 x WLAN 2.4 GHz 1 x USB 3.0 2 x USB 2.0 1 x HDMI 1 x RS232 1 x line out 1 x line in

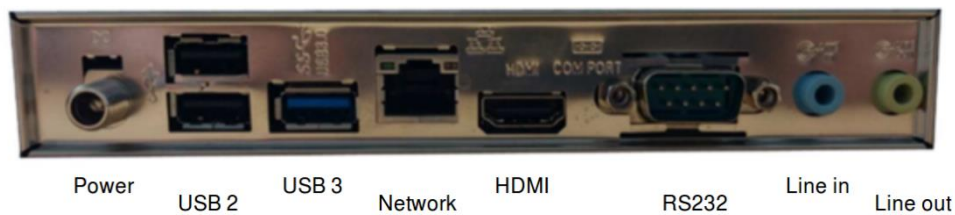
Power consumption without GSM modem:	11 W
With GSM modem:	13 W

Size:	199 x 180 x 39 mm
-------	-------------------

### 3 Connections on the Eltako GFVS-Safe IV



*Figure 1: Front view*



*Figure 2: Rear connections*

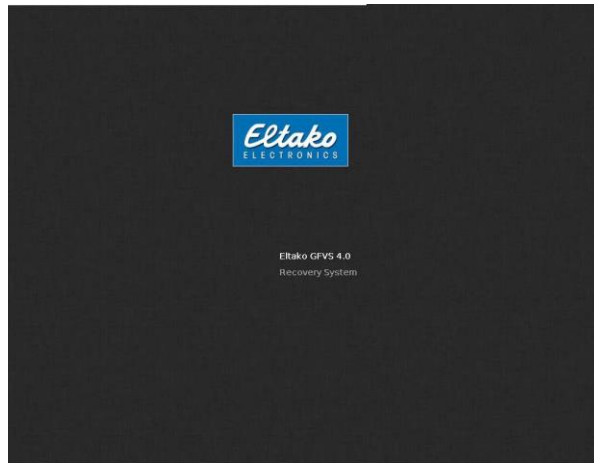
**i** When installing, pay attention to the right cooling. One of the three air vents must be at the top.

## 4 First start-up

### 4.1 Start-up

- Install the blue EnOcean, the black WLAN and the optional blue GSM antenna to the connections provided (see Figures 1 and 2).
- Plug the external power supply unit into a 230 V socket and connect it to the GFVS Safe IV. The blue LED indicates power supply.
- To configure the GFVS software, connect a monitor to the VGA or HDMI port and a keyboard and mouse to the USB ports.
- Alternatively, you can connect a PC via remote control (VNC) via network to the Eltako GFVS-Safe IV and carry out configuration.

Then you can switch on the Eltako GFVS-Safe IV. During the run-up, you will see the dialog below:



*Figure 3: Start view*

As required, you can switch to recovery mode to reset the system to factory settings. If you make no subsequent input, the Eltako GFVS-Safe IV restarts after 10 seconds.

The Eltako GFVS 4.0 software is already installed and starts automatically after switch-on:

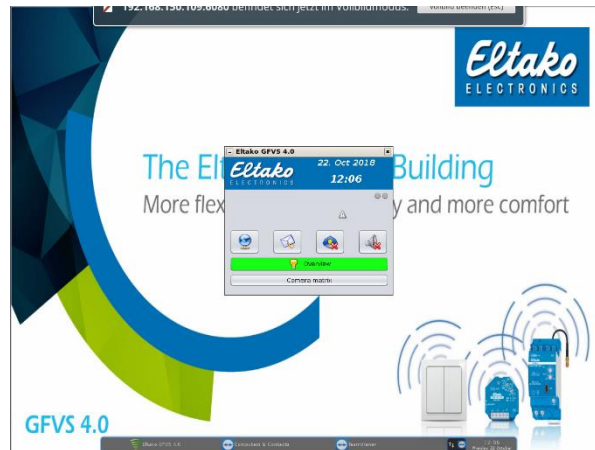


*Figure 4: Start the Eltako GFVS 4.0-Software*



## Quick Start Guide Eltako GFVS-Safe IV

The Eltako GFVS 4.0 software starts.

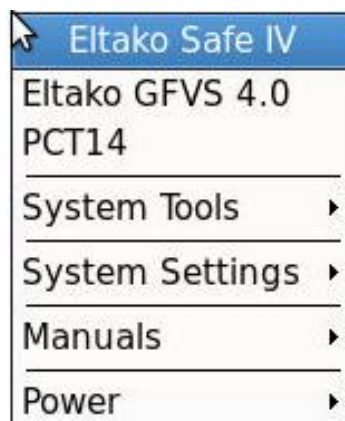


*Figure 5: The Eltako GFVS 4.0 software starts.*

A task bar appears at the bottom of the screen. Icons are displayed for network connection as well as the date and time.

### 4.2 Menu

Open the menu by right-clicking on the background.



*Figure 6: Eltako GFVS-Safe IV menu*

#### 4.2.1 Eltako GFVS 4.0 software

If required, the Eltako GFVS 4.0 software can be started by clicking the menu option “GFVS 4.0”. Open a detailed instruction manual using “Manuals - Eltako GFVS 4.0 manual”.

#### 4.2.2 PCT 14

The PCT 14 (version 7.6) is integrated In the GFVS Version 4.0 and higher.

### 4.2.3 Select language

Change the language by using the menu option “System settings - Select language”. The GFVS must be connected to change the language.

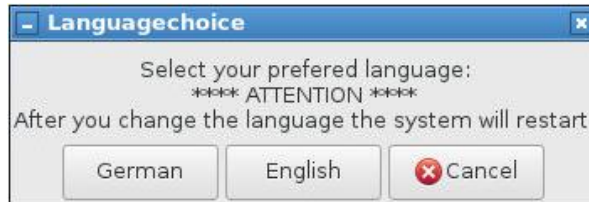


Figure 7: Language selection

### 4.2.4 Network settings

Adapt the configuration of the network cards using “System settings - Network settings”.



Figure 8: Network settings

The LAN interface is set up to operate in a network with DHCP.

### 4.2.5 Remote settings

A device-specific password was set in the as-delivered state. It is located on the rear of the device. It can be overwritten by entering a new password.

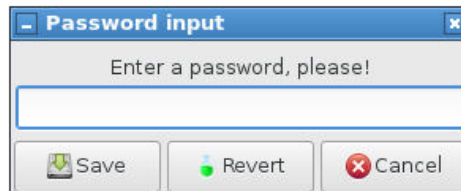


Figure 9: Remote settings



When the password is reset, the MAC address of the active network unit is set.



*Figure 10: MAC address of Ethernet interface*

**!** **Note:** Change the preconfigured password immediately or deactivate the service so that no unauthorised person can connect to the system.

#### 4.2.6 BSC-BAP finder

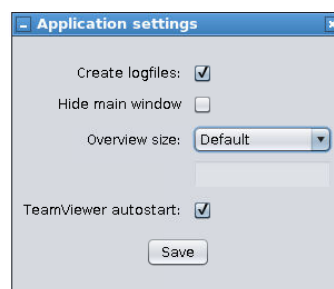
The BSC-BAP finder is for configuring TF-IP-Con, BAP, BIER or IPG170(P) and is opened with menu option "System tools - BSC-BAP Finder". Open detailed instructions using "Manuals - BSC-BAP Finder".

#### 4.2.7 GFVS 4.0 settings

This dialog is opened using "System tools - GFVS settings". The option "Create log files" creates log files which track any errors and provide assistance to Technical Support.

Adapt the size of the overview window to the connected PC client using "Overview size".

"TeamViewer Autostart" starts TeamViewer to the Autostart routine. A reboot is needed to accept the setting.



*Figure 11: Program settings*

"Hide main window" starts the Eltako GFVS 4.0 software with the overview window. The buttons in the main window are integrated in the "Configuration" menu.

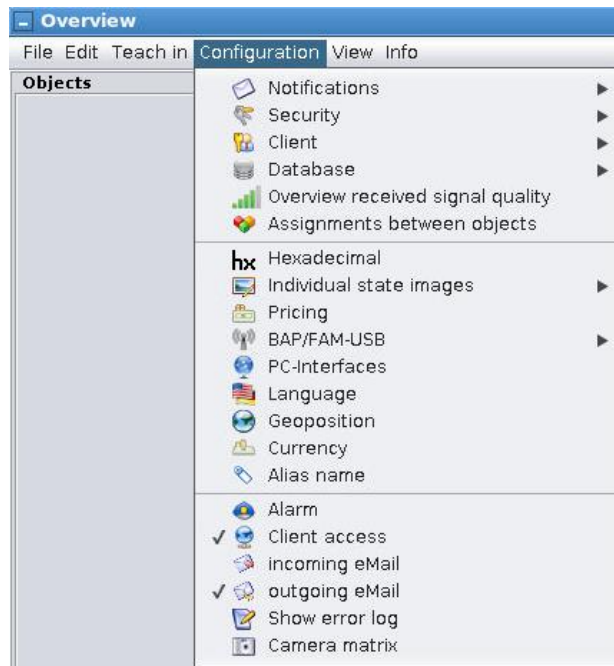


Figure 12: Configuration menu

## 4.3 Presettings

### 4.3.1 License

The Eltako GFVS-Safe IV is delivered with an activated Eltako GFVS 4.0 license. If it is necessary to carry out a repeat activation, an Eltako GFVS 4.0 license key is included. However, it must be released by Eltako before activation. Contact Technical Support for this.

### 4.3.2 Database

PostgreSQL database is set up for data management.

### 4.3.3 Network

The LAN interface is set up to operate in a network with DHCP.



Figure 13: Configuration menu

Go to [Link information] and an information window appears containing all active interface interfaces and their settings.



Figure 14: Configuration menu

## 5 Eltako quickcon<sup>®</sup> technology

This allows the simple connection of an Eltako GFVS Server to a Mobile Client without any knowledge of how to handle IP address translations (e.g. DynDNS) or port blocking.

**i Important:** Using the app creates data traffic which may entail additional costs independent of the mobile radio contract.

Download the Eltako GFVS Tablet or the Eltako GFVS Mobile Client from the App Shop of your mobile radio system (iPhone->iTunes, Android -> Google Play) and install it.

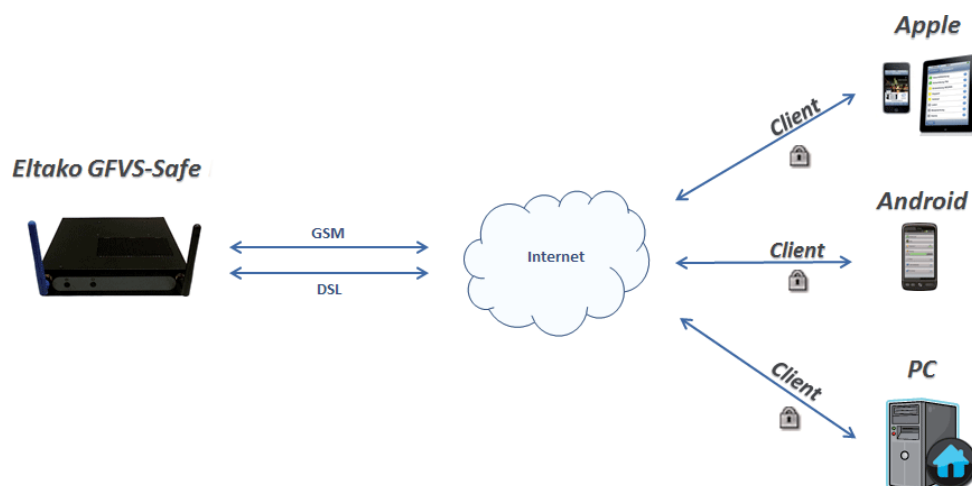


Figure 15: Use of encrypted links without port blocking or IP address translation

## Configuration of Mobile Client and Eltako GFVS Server

First create a profile in the Eltako GFVS 4.0 software using “Configuration - Client - Profile manager“. This defines the rights of the Mobile Client in the Eltako GVFS 4.0 software.

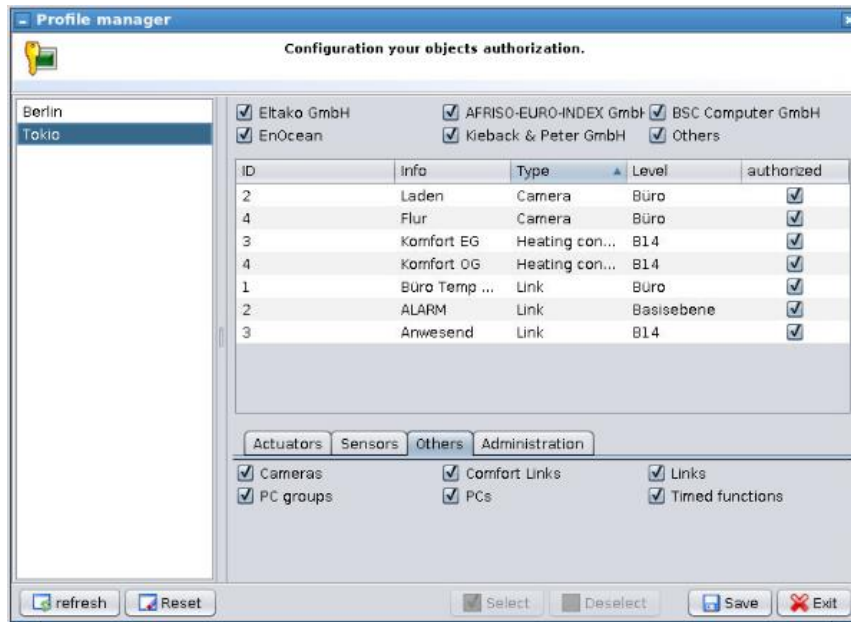


Figure 16: Profile manager

Then create a new device in the Eltako GFVS 4.0 software using “Configuration - Client - Eltako GFVS 4.0 Mobile”.

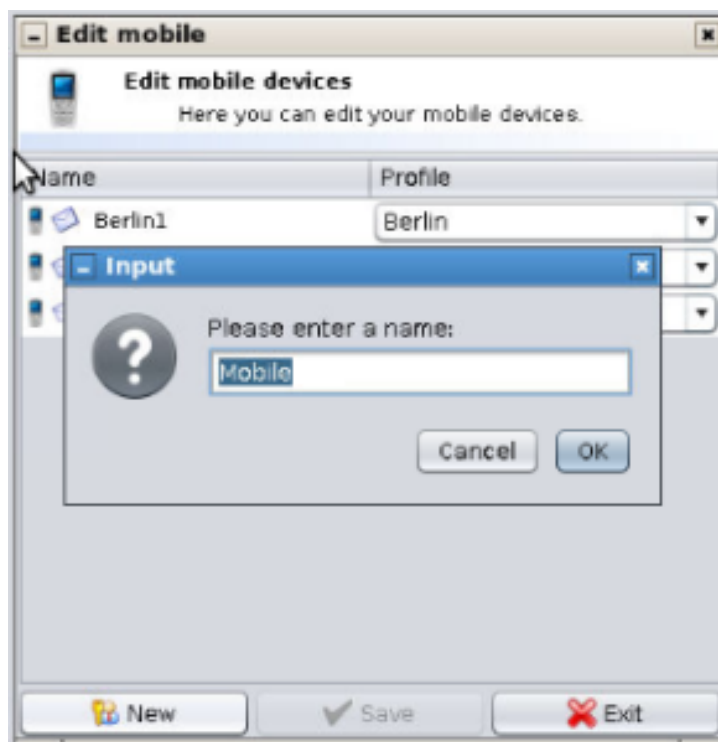


Figure 17: Create Mobile Client

### GFVS Client

Then assign the user to the corresponding access profile and save your settings. Also enter the name of the smartphone or tablet.



Figure 18: Name Mobile Client

Right-click on the client set up and then on “Show QR code”.

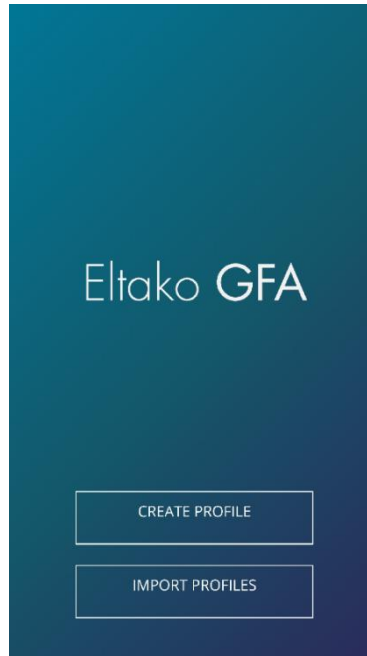


Figure 19: Show QR code



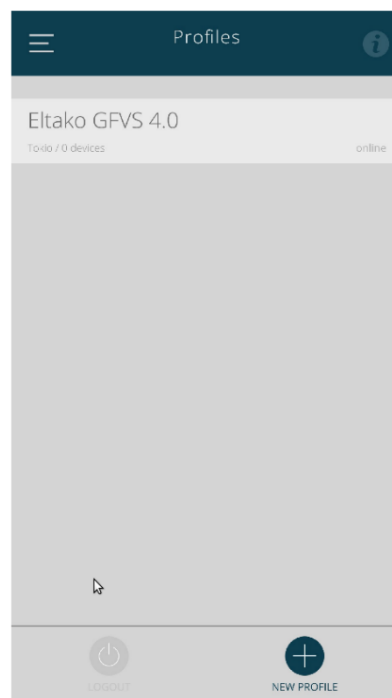
## Quick Start Guide Eltako GFVS-Safe IV

Open the GFA2 app on the appropriate device and go to Create profile.



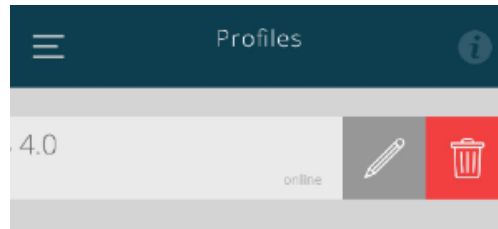
**Figure 20: Create a profile**

Drag the bright area of the display over the displayed QR code of the GFVS server. As soon as the GFA2 recognises the QR code, the screen switches to the access profiles. Swipe left over the newly set-up access profile to rename it.

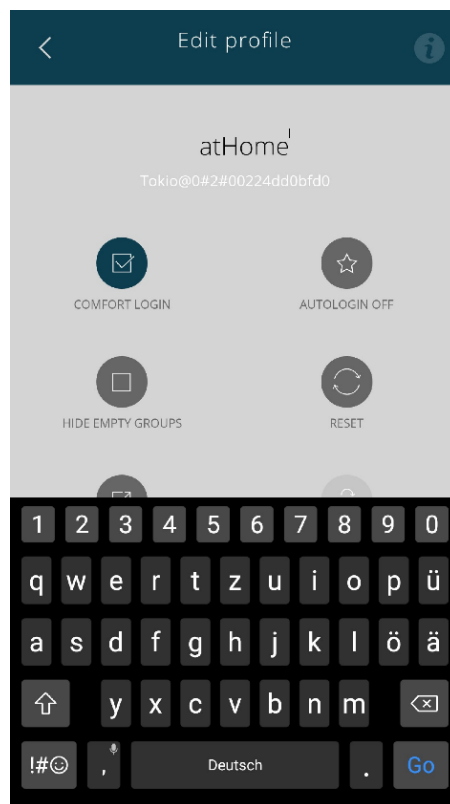


**Figure 21: Create a profile**

Highlight the “Eltako GFVS 4.0” text to rename the profile.



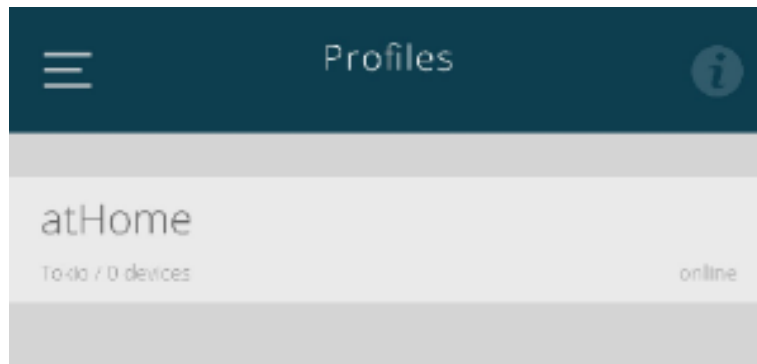
*Figure 22: Rename profile*



*Figure 23: Rename profile*

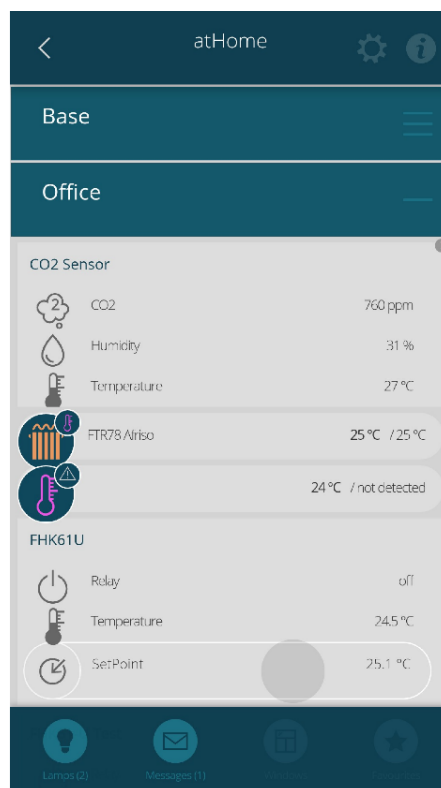


Press the icon to return to the profile overview.



**Figure 24: Select profile**

Access your GFVS server by tapping the corresponding profile.



**Figure 25: Server access**



## 6 System tools

### 6.1 GFVS tools

Right-click on the background to view the menu. Use “System tools - GFVS tools” to access a dialog in which you can save or restore the system and/or the database.

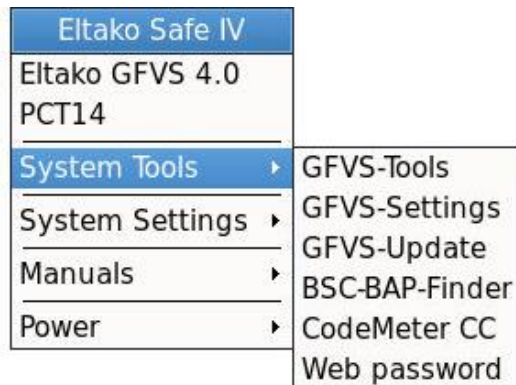


Figure 26: “System tools” menu

The following dialog appears:



Figure 27: Eltako GFVS System Tools

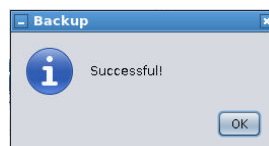
### 6.1.1 Save, restore or delete database

To save your database, click “Save database”. A grey bar appears at the bottom of the window.



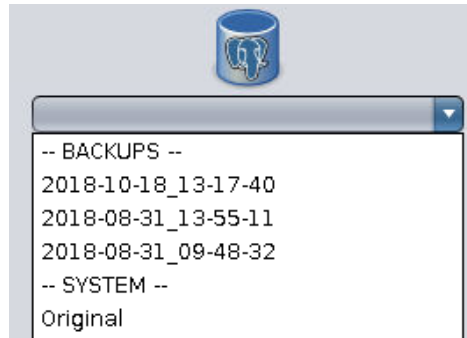
*Figure 28: “Save database” is executed*

As soon as the database is saved, a new dialog appears. Confirm by clicking “OK”.



*Figure 29: Save database successful*

If you want to restore an older database, select the required database from the dropdown box. Alternatively, select a database with the as-delivered state of the Eltako GFVS-Safe IV.



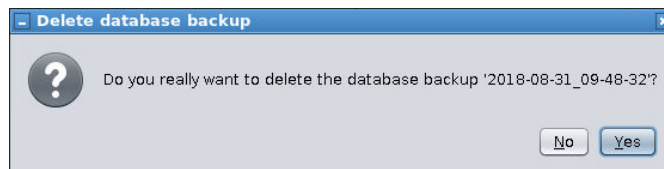
**Figure 30: Restore database**

After you select a database, press the button “Restore database”.



**Figure 31: Restore successful**

The dialog confirms that the database was successfully restored. Click “OK”. To delete a backup of the database, select the database from the dropdown box and then confirm by clicking the button “Delete database backup”:



**Figure 32: Delete backup**

The dialog below asks you whether if you want really delete the database backup. Confirm by clicking “Yes” to delete the selected database or select “No” to cancel the process.

### 6.1.2 System backup

Click the button “Save system” and your system is saved.



*Figure 33: System backup*

The following dialog appears:



*Figure 34: User backup*

If the backup was successful, another dialog appears. End this dialog by clicking “OK”. The dropdown box “Maximum number of system backups” indicates how many backups of your system are saved. Use the menu option “Restore system backup” to play back an earlier backup.

The backup contains the system state at the time of the backup. If changes were made in the GFVS since that time, the state of the database required must be played back.



*Figure 36: Restore backup*

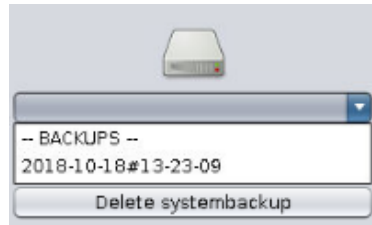


*Figure 35: Restore backup*



**Note:** Make sure that the Eltako GFVS-Safe IV is not unplugged from the power source during the playback process.

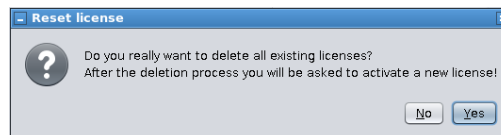
Use 'Delete system backup' to remove backups which are no longer necessary.



*Figure 37: Restore backup*

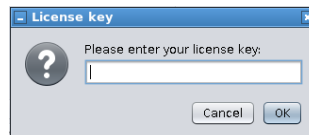
### 6.1.3 Delete license in case of license problems

Caution: Only execute this process on the instruction of Support. The license must first be released for repeat activation. The button "Delete license" deletes your Eltako GFVS 4.0 license. Click on it to open a window to enter the password. Password: 0000 Only use this option on the instruction of Eltako GFVS 4.0 Support. Please note that you cannot use the Eltako GFVS 4.0 software without a valid license. A web access is also required to activate the new license.



*Figure 38: Delete license*

Confirm the deletion process by pressing "Yes". Then enter a new license in the next dialog to activate it.



*Figure 39: Enter new license key*

#### 6.1.4 Restore factory settings

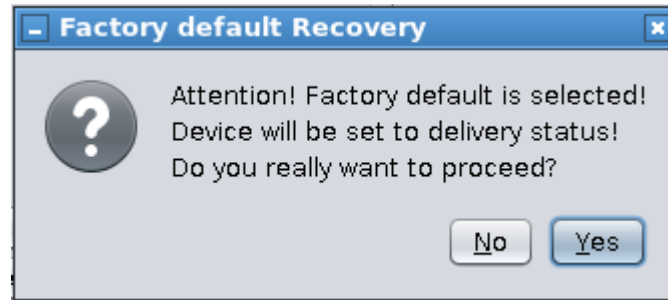


*Figure 40: Restore factory settings*

The system is reset to the as-delivered state. This is only necessary in exceptional cases.

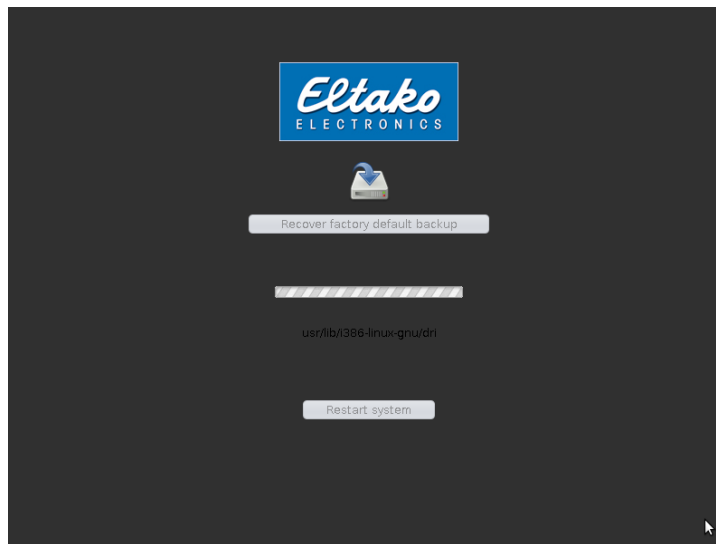


*Figure 41: Restore factory settings*



*Figure 42: Restore factory settings*

When you confirm the repeat question, the system reboots and executes the restore process.



*Figure 43: Restore process*



### 6.1.5 GFVS settings

Additional settings can be made to the GFVS server under the menu option “GFVS Settings”.

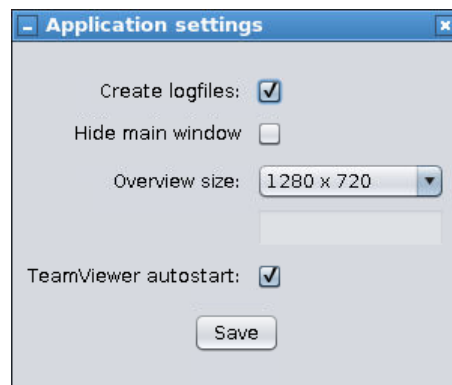


Figure 44: Program settings

- **Create log files:** Creates log files which log the behaviour of the GFVS software.
- **Hide main window:** After activating the menu option, the GFVS software starts without the small start window every time. The start procedure goes directly to the overview window. The setting options of the start window are then displayed in the overview under [Configuration].
- **Overview window size:** If one or more PC clients are in use, you can set a standard size for the overview window here. The icons and controls are positioned at the same spot on each client.
- **TeamViewer Autostart:** When the function is activated, the system is started with TeamViewer every time.

**i** It is not recommended to activate this function or leave it active if no support ticket exists or a support is pending.

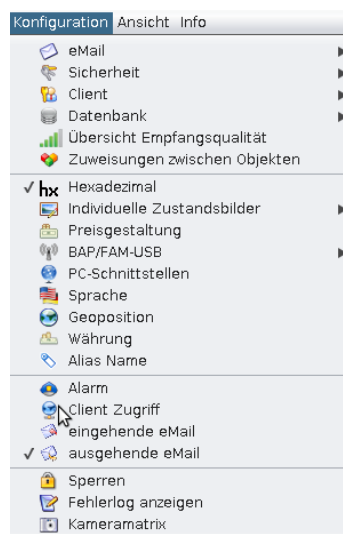


Figure 45: Configuration

### 6.1.6 GFVS update

Use “System tools - GFVS update” to update the firmware in the Eltako GFVS-Safe IV or the Eltako GFVS 4.0 software. If there is an update for your system, confirm the window with “Yes”. Depending on the size of the update and the web access used, the procedure may take some time. Internet access is needed.



Figure 46: Update

## 6.2 Bap-Finder

The Bap-Finder software is for finding and configuring IPG-170 and TF-IP-Con. The software assists in network configuration. For more details please refer to the corresponding documentation.

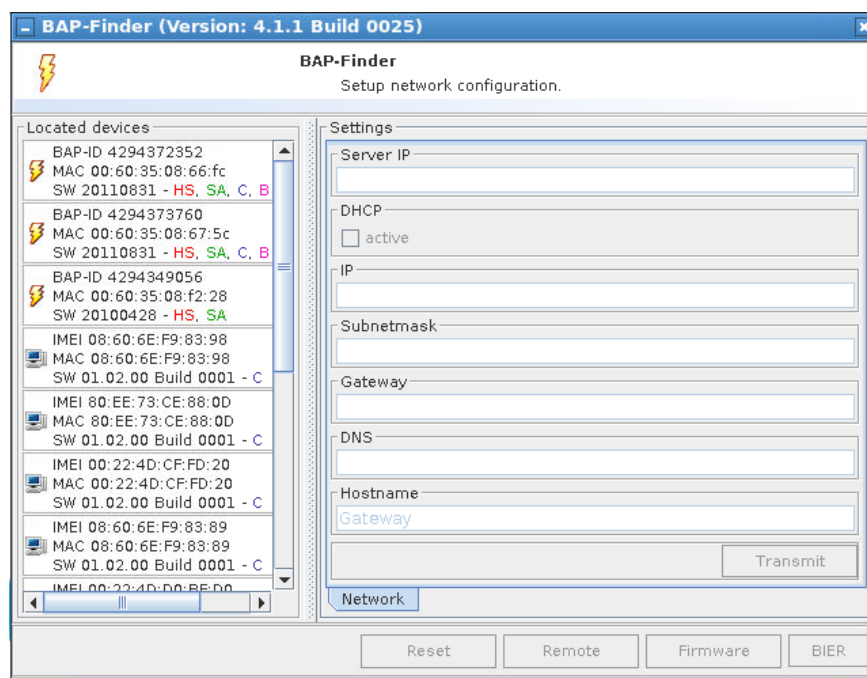


Figure 47: BAP-Finder

### 6.3 Code Meter

Settings in the Code Meter control centre are only carried out by Support.

### 6.4 Change web code

Web access to the GFVS is activated by setting the web code. The website can be reached at “http://IP address” to upload/download files. The IP address of the GFVS server can be displayed in the network administrator.

## 7 System settings

Other settings can be carried out in the menu option “System settings”.

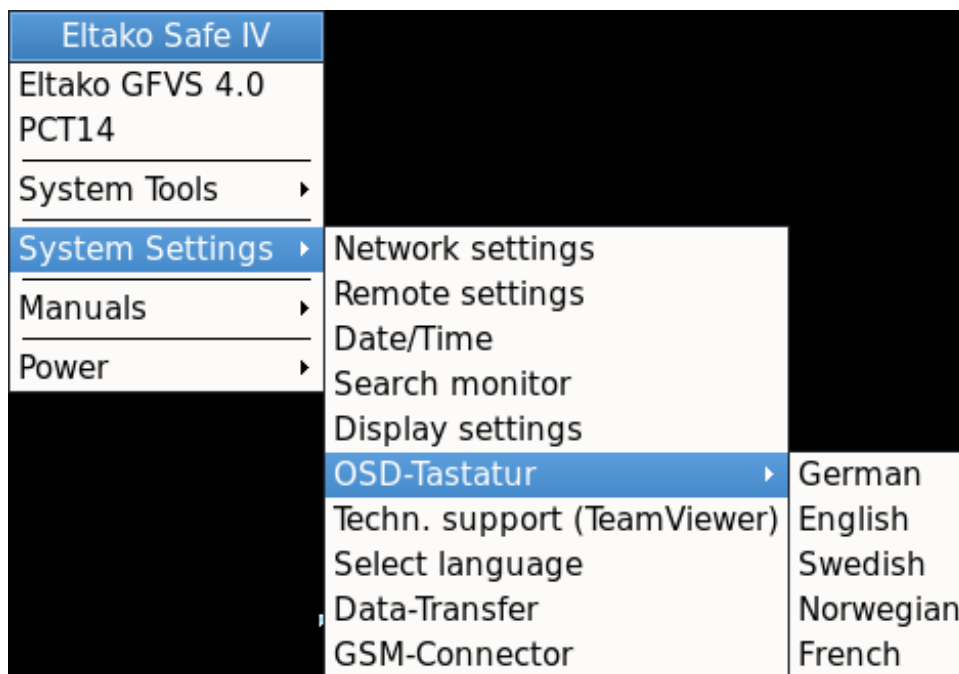


Figure 48: “System settings” menu

## 7.1 Network settings

Appropriate configurations can be carried out in the Network settings menu option.



Figure 49: Network settings

Go to the associated network interface and carry out the configuration under [Edit].

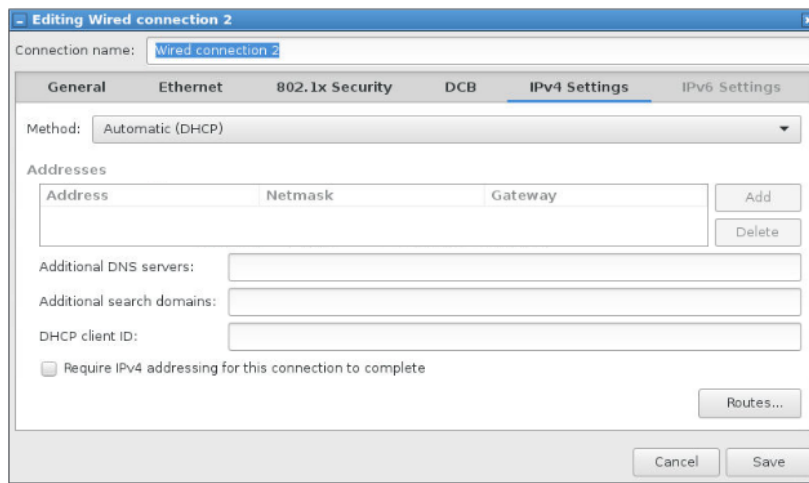


Figure 50: Configuration

**i** We advise you to assign the server with a fixed IP address. However, make sure that the address is not outside the IP range of the local DHCP server.

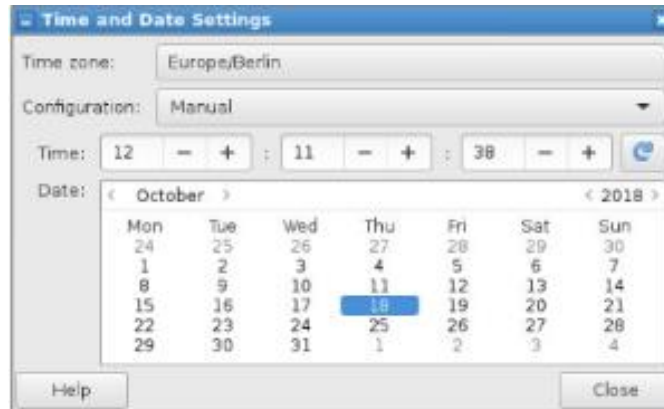
## 7.2 Remote settings

Access by VNC to the GFVS server is activated in the as-delivered state. The default password is located on the rear of the device.

**i** We urgently advise you to change this directly after start-up.

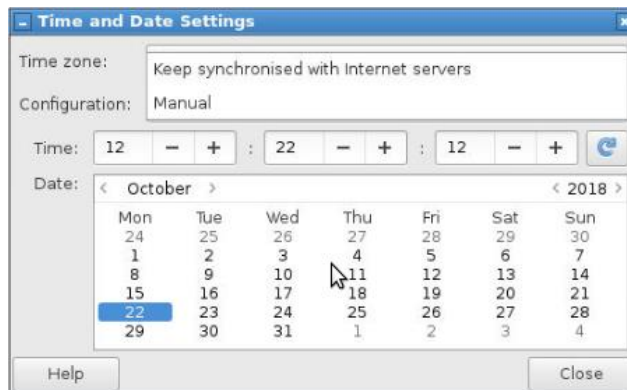
### 7.3 Date/time

You can change the date and time in the dialog under the menu option “System settings - Date/time”.



*Figure 51: Time and date settings*

Automatic clock synchronisation can be activated in the Configuration option.



*Figure 52: Clock synchronisation*

### 7.4 Search monitor

If several monitors are connected to the GFVS server, you can define which the primary clock is with this menu option.

## 7.5 Display resolution

If there are problems with a monitor, the required resolution and refresh rate of the connected monitor can be set here.

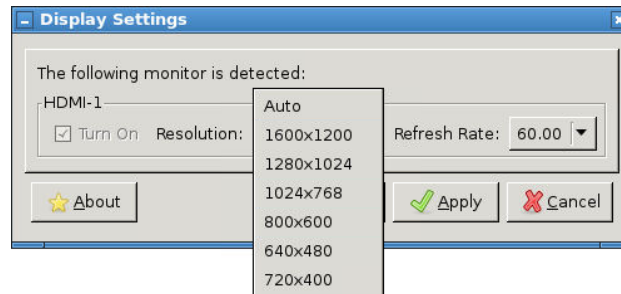


Figure 53: Display resolution

## 7.6 OSD keyboard

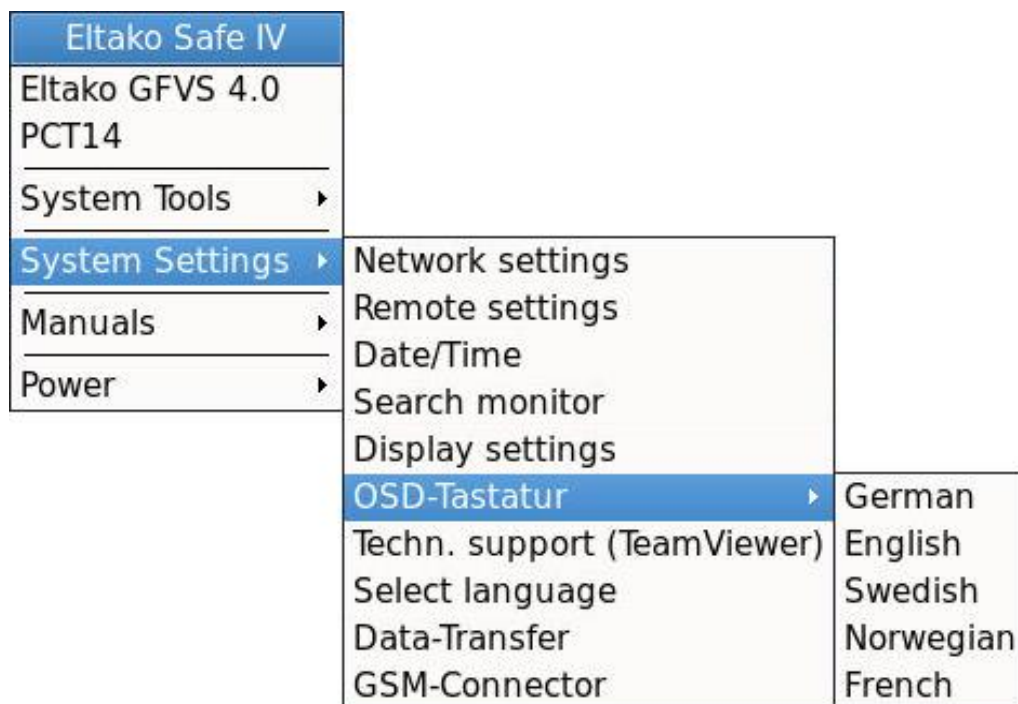


Figure 54: OSD keyboard

Country-specific keyboard assignments can be made here.

## 7.7 Technical Support (TeamViewer)

TeamViewer offers the possibility of remote access by Technical Support.

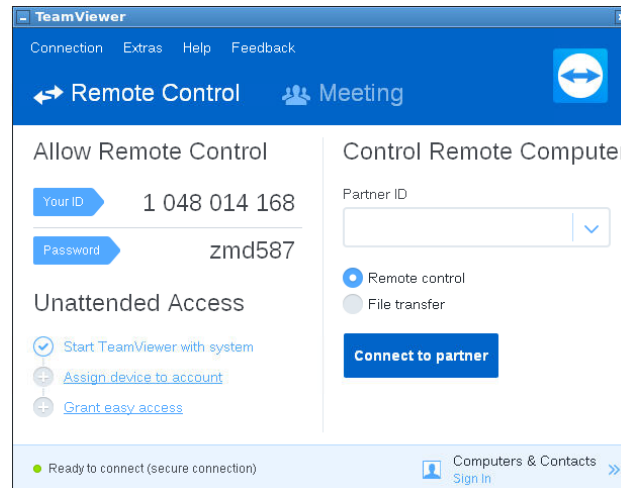


Figure 55: TeamViewer

## 7.8 Copy background images

If you want to use your own background images and user-defined icons in the Eltako GFVS 4.0 software, you can copy them from a USB stick to the Eltako GFVS-Safe IV.

**Note:** The following folder structure must be set up on an empty USB stick: **/hc\_import/pictures/\*.\***. Otherwise, the images are not copied.

The menu option "System settings - Import-Export" opens the window "Data transmission". Tick the checkbox in front of "Import directory" and then click the button "Import" to copy all the files from the folder on the USB stick to the hard disk. The "Delete" button deletes the import, export or log directory depending on whether the tick is set or not.



Figure 56: Copy images and icons

## 8 Switch off Eltako GFVS-Safe IV

Right-click on the background to open the “Power” menu.



*Figure 57: “Power” menu*

Here you can choose whether you want to start, restart or switch off the GFVS-Safe IV in Recovery Mode.

## 9 Conformity

Eltako GmbH hereby declares that the wireless system type GFVS-Touch IV complies with Directive 2014/53/EU. The full wording of the EU Declaration of Conformity is available at the following web address: [www.eltako.com](http://www.eltako.com)





## 10 Technical Support

For support, please contact:

**Eltako GmbH**  
**Hofener Strasse 54**  
**70736 Fellbach**  
**Germany**

**Product consulting and technical information:**

**Tel: +49 (0)711 943500-02**

**or by email to: [Technik-Beratung@eltako.de](mailto:Technik-Beratung@eltako.de)**

**Customer service and order processing**

**Tel: +49(0)711 94350001**

**Fax: +49(0)711 5183740**

**[Kundenservice@eltako.de](mailto:Kundenservice@eltako.de)**