



Quick start guide:

Eltako GFVS-Safe II

Index

1	General	3
2	Scope of delivery	3
3	Specifications.....	3
4	Connections of the Eltako GFVS-Safe II	4
5	First-start-up.....	5
5.1	Menu	7
5.2	Eltako GFVS 3.0-Software.....	7
5.3	PCT 14.....	7
5.4	Date/Time.....	7
5.5	Language selection	8
5.6	Network settings	8
5.7	Remote settings.....	9
5.8	BSC-BAP Finder	9
5.9	GFVS 3.0 settings	9
5.10	Presets	10
5.10.1	License	10
5.10.2	Database.....	10
5.10.3	Network.....	10
5.11	GFVS-Update	10
6	Eltako quickcon®-technology	11
7	System tools	15
7.1	GFVS-tools	15
7.1.1	Backup, restore or delete database	16
7.1.2	System backup.....	17
7.1.3	Reset license for license issues.....	18
7.2	Repair license	19
7.3	Code MeterCC	19
7.4	Change web password.....	19
8	System settings.....	20
8.1	Techn. Support (team viewer).....	20
8.2	Copy wallpapers	20
8.3	Export log-files.....	21
9	Switch off Eltako GFVS-Safe II	22
10	Restore system backup	22
11	Technical support	24

1 General

To ensure reliable function of the product please read this manual carefully. The liability of Eltako GmbH for defects shall be excluded if the defects are due to usage not according to the intended purpose or ignoring the operating instruction (incorrect installation, incorrect start-up, incorrect operation, etc.).

The intended purpose of Eltako GFVS-Safe II with LAN, WLAN and optionally M2M communication is the visualization of sensor-information, actuator switching states and consumption data plus the control of actuators.

2 Scope of delivery

- Eltako GFVS-Safe II
- External power supply and cables
- 2 x Ethernet connection cable 2m RJ45 (therefrom 1 x Cross-Over)
- Associated antennas
- Eltako GFVS 3.0-software package incl. license key
- Quick start guide (this manual)

3 Specifications

Processor:	Intel® Atom™ N2800 (2 x 1,86 GHz)
Chip set:	Intel NM10 Express
Working memory:	2 GB DDR3 Fixed disk storage: 120GB SSD Graphics function: Intel® GMA
Interface:	1 x LAN RJ-45 Intel® 10/100/1000 1 x WLAN 802.11 b/g/n 4 x USB 2.0 (2 x High-Current 1.3 A) 1 x HDMI 1 x VGA 1 x Line out 1 x Mic in
Software and Applications:	Eltako GFVS 3.0 PCT 14 Software Backup- and restore function

Power consumption

without GSM Modem: 11 W

with GSM-Modem: 13 W

Dimension: 199 x 180 x 39 mm

4 Connections of the Eltako GFVS-Safe II

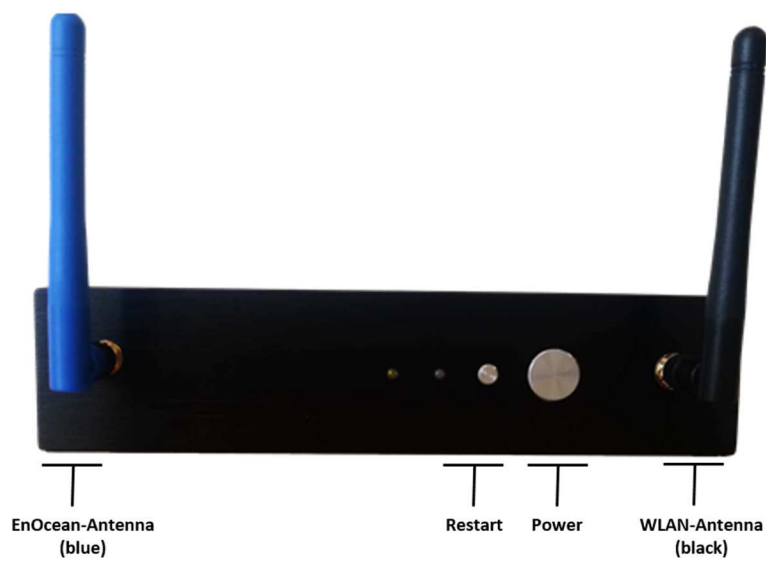


Figure 1: Front view



Figure 2: Backside

- i** Ensure an optimal cooling when mounting. One of three ventilation outlets must be faced upwards.

5 First-start-up

- Mount the blue EnOcean, the black WI-FI and the optional blue GSM-Antenna to the provided ports (figure 1 and 2)
- Connect the external power supply to a 230V socket and the GFVS-Safe II, the blue LED shows power supply
- To configure the software connect a monitor to the VGA or HDMI Port, keyboard and mouse to the USB ports
- Alternatively you can connect the Eltako GFVS-Safe II with a remote controlled PC via network to configure the system
- Using the Cross-Over-cable it is recommend to assign a fixed IP address, for details see menu item 5.7

Switch on the Eltako Safe II. During start-up you will see the following dialog:



Figure 3: start-up-view

If necessary you can change to the recovery mode to restore a system backup. If no entry is made the Eltako GFVS-Safe II will be started after 10 seconds.

Eltako GFVS 3.0-Software is already installed and launches automatically after switching on:

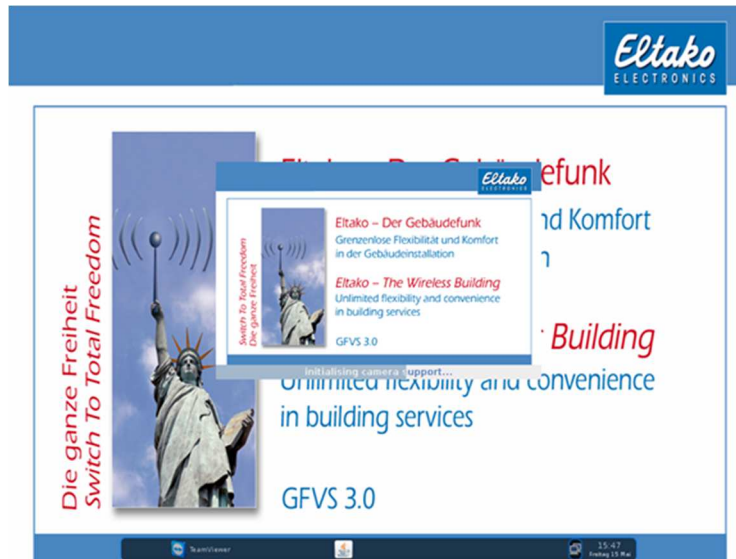


Figure 4: Start of the Eltako GFVS 3.0 software

Eltako GFVS 3.0-Software is running:



Figure 5: Eltako GFVS 3.0 software has been started

The task bar is located on the bottom of the screen. Beside date and time the icon for the network connection is displayed.

5.1 Menu

The menu is invoked by a right-click on the background:

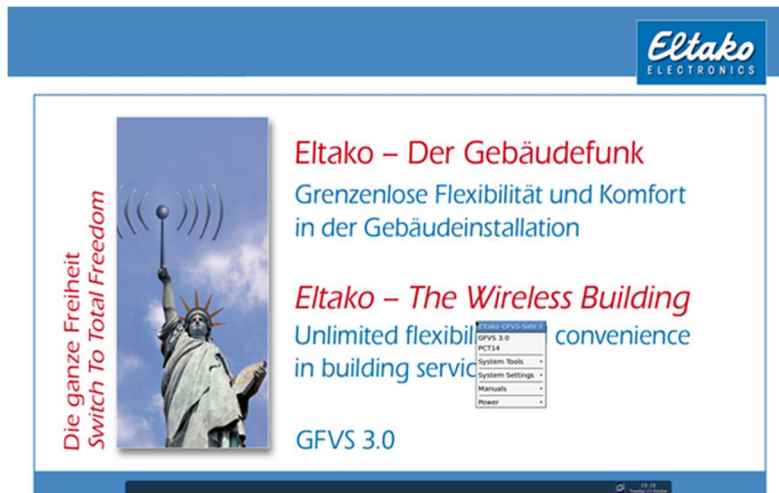


Figure 6: Menu

5.2 Eltako GFVS 3.0-Software

Eltako GFVS 3.0-Software is launched via the menu item “GFVS 3.0”. A detailed manual is available under the menu item “manuals – Eltako GFVS 3.0 manual”.

5.3 PCT 14

Since Version 3.8.3.0 the PCT14 (Version 6) is already integrated.

5.4 Date/Time

Via the menu item “systems settings - date/time” you invoke the dialog to adjust date/time:

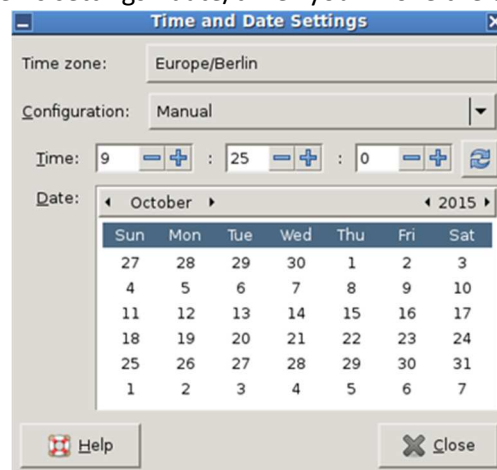


Figure 7: Time and date settings

5.5 Language selection

Via the menu item “system settings – language selection” you invoke the dialog to change the language.

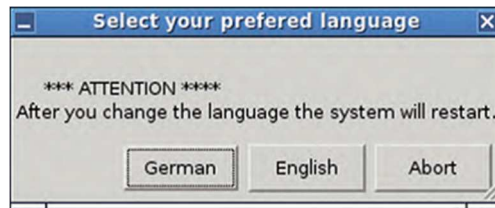


Figure 8: Language selection

5.6 Network settings

Via the menu item “system-settings – network-settings” the configuration of network adapter can be adjusted.

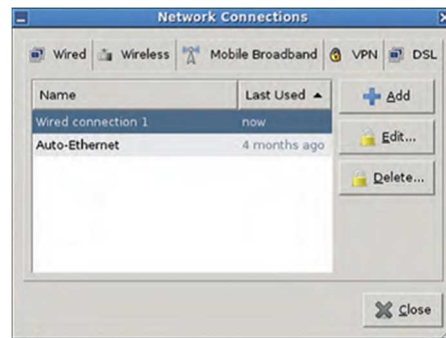


Figure 9: Network settings

The LAN Interface is configured to operate in a network with a DHCP server.



Note: In recovery mode the LAN interface has the IP 192.168.168.100.

5.7 Remote settings

Via the menu item “system settings – remote-settings” further settings for remote access can be made.



Figure 10: Remote settings

If you connect another computer via crossover cable to the network port of the Eltako GFVS-Safe II, you can directly access with a remote client (e.g. TightVNC).

The default password is: password

The Interface is configured to operate in a network with DHCP.



Note: In recovery mode the network interface has the IP 192.168.168.100.

5.8 BSC-BAP Finder

The BSC-BAP finder is used for configuration of BAPs, BIRS and IPG170(P) and can be opened via menu item “system-tools –BSC-BAP finder”.

A detailed manual is available via the menu point “manuals – BSC-BAP finder”.

5.9 GFVS 3.0 settings

This dialog is invoked via “System tools - GFVS settings”.

The menu item “create log files” generates log files that document possible errors and provide solutions for the technical support.

With “size of the overview window” the size of the overview window to associated pc-Clients is adjusted

„Team Viewer Start-up integrates the team viewer to the start-up. To accept the setting, a restart is required.

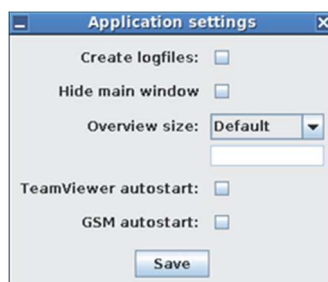


Figure 11: Application settings

“Hide main window” starts the Eltako GVFS 3.0 software with the overview window. The buttons of the main window will be integrated into the main menu “configuration”.

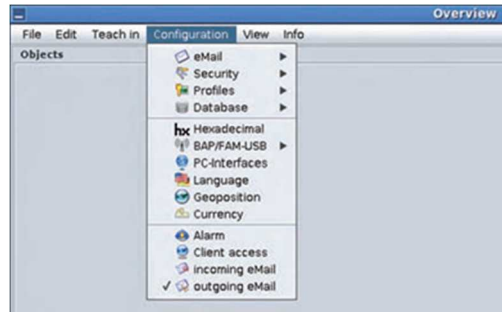


Figure 12: configuration menu

5.10 Presets

5.10.1 License

The Eltako GFVS-Safe II is delivered with an activated Eltako GFVS 3.0 license. If re-activation is required, an Eltako GFVS 3.0 license key is attached.

5.10.2 Database

For data storage a PostgreSQL database is established.

5.10.3 Network

The interface is configured to operate in a network with DHCP.

5.11 GFVS-Update

Via “system tools - GFVS-Update” the firmware of Eltako GFVS-Safe II or GFVS 3.0-software can be updated. The update can be installed via internet or USB stick. The file for the update has to be on the USB stick subfolder “/hc-import/update/*.”*.“.

If the USB stick is not recognized, it can be mounted with a click on the USB-stick icon.



Figure 13: GFVS-Update

6 Eltako quickcon®-technology

Permits the set-up of a simple connection between the Eltako GFVS Server and a Mobile Client without any knowledge of changing IP addresses (e.g. DynDNS) or disable ports.

Caution: Using the app generates data traffic, which may lead to additional costs, depending on the mobile phone contract.

Download the Eltako GFA App from the app store of your mobile radio system (iPhone->iTunes, Android -> Google Play) and install.

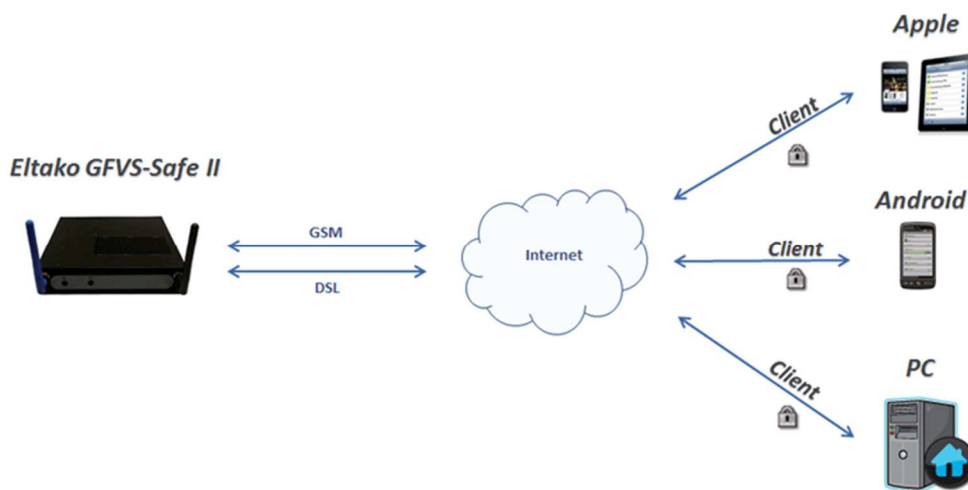


Figure 14: Use encrypted connections without blocking ports or changing IP addresses

Configuring the mobile client and Eltako server

First create a profile in the Eltako GFVS 3.0 software using “configuration – profiles – profile manager”. This defines the rights of the mobile client in the Eltako GFVS 3.0 software.

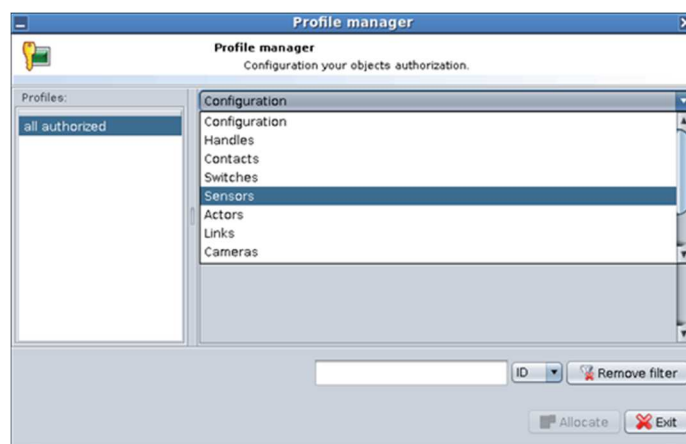


Figure 15: profile manager

Then create a new device in the Eltako GFVS 3.0 software using “configuration – security – client – Eltako GFVS 3.0 mobile”.



Figure 16: create a mobile client

GFA-Client

Enter the name of the smartphone or tablet.

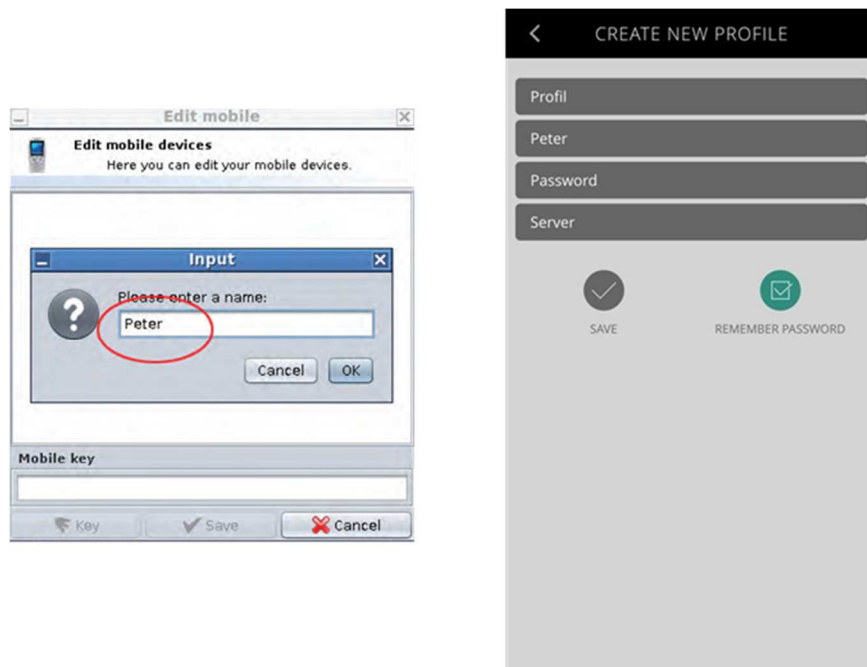


Figure 17: name the mobile client



Note: The device name must be identical in the app and the GFVS server. (Please pay attention to the blanks!)

Then assign a profile to the device. Without a profile the device has no rights in the Eltako GFVS 3.0 software.



Figure 18: Assigning a profile to the mobile

All generated profiles are displayed in the drop-down box:



Figure 19: Assigning a profile

Click on the button “key” in the Eltako GFVS 3.0-Software to open the dialog for entering the password. You may enter any password without restrictions. Then also enter this password in the “password” box of the app.

Additionally a figure in the box mobile key has to be entered (six-digit, e.g. 000000).

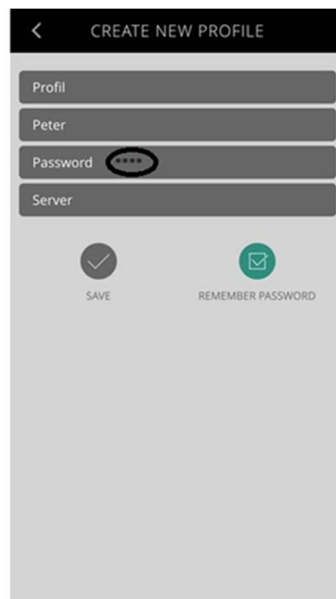


Figure 20: enter mobile key/password

Connection via quickcon®:

Enter the IMEI of the GFVS server in the “server IMEI” box. You will find this on the device sticker or in the Eltako GFVS 3.0 menu – “info - about Eltako GFVS 3.0”.

Alternatively you can also enter the IP address or DynDNS address of the GFVS server in the “server address” box.

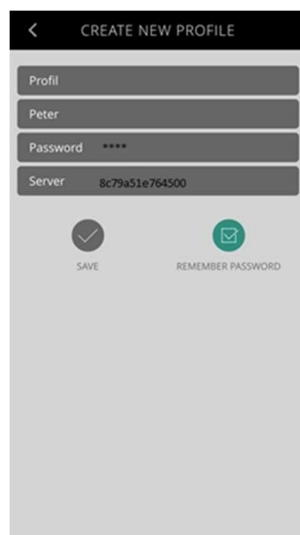


Figure 21: IMEI of the GFVS server

Click “save” to complete the process.

i Note: Saving the device name and the IMEI of the mobile device, ensures that no unknown device can be connected.

7 System tools

7.1 GFVS-tools

A right click on the background shows the menu. Via “system-tools – GFVS 3.0 tools” you access a dialog to save or restore the system and / or database.

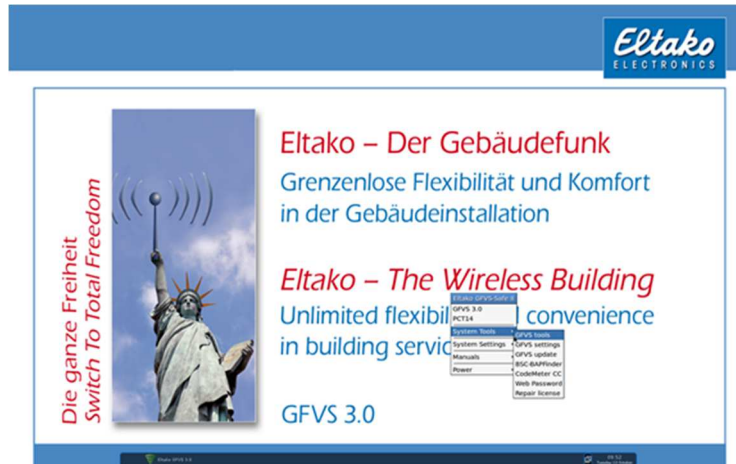


Figure 22: Menu "system-tools"

The following dialog appears:



Figure 23: Eltako GFVS 3.0 system tools

For a backup, absolutely make sure that the Eltako GFVS 3.0 software was finished. Otherwise, an error message appears:



Figure 24: database in use

7.1.1 Backup, restore or delete database

To back up your database, click on „backup database“. A gray bar appears at the bottom of the window.



Figure 25: "backup database" is executed

As soon as the backup is finished, a new dialog appears. Confirm with “ok”.



Figure 26: successful database backup

After each restart of the Eltako GFVS II, an automatic backup of the database takes place.

If you want to restore an older database select it from the drop-down box. Alternatively a database with the delivery status of Eltako GFVS-Safe II can be selected.

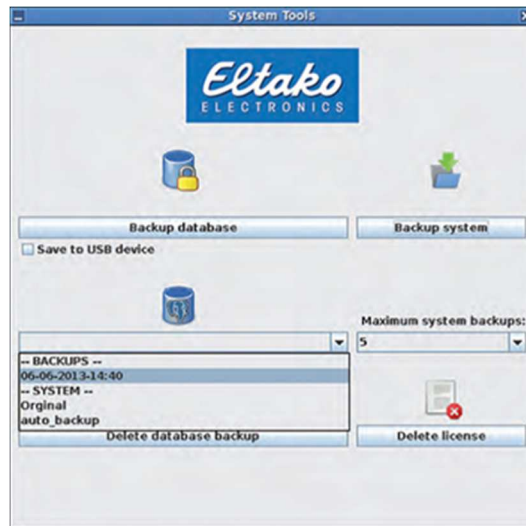


Figure 27: restore database

Once you have selected a database, press the button “restore database”.



Figure 28: recovery successful

The successful recovery of the database is confirmed with a dialog. Click “ok”.

To delete a created database backup, select the appropriate database from the drop-down menu, then press “delete backup database” with a click on the button.



Figure 29: delete backup

In the following dialog you are asked, if you want to delete the database. Confirm with “yes” to delete the selected database or “no” to cancel the operation.

7.1.2 System backup

Click on the button “backup system” and a backup of your system is created.



Figure 30: system backup

The following dialog appears:



Figure 31: user backup

If the backup was successful, a new dialog box opens, which you confirm with “ok”.

The drop down box “maximum system backups” specifies how many backups of your system are stored.

7.1.3 Reset license for license issues

The button “delete license” deletes your Eltako GFVS 3.0 license. A click opens a window for entering the password. Password: 0000

This option should only be used in case of an emergency by the Eltako GFVS 3.0 support. Note that the Eltako GFVS 3.0 software cannot be used without a valid license. Furthermore, an internet connection is required to activate the new license.

*Figure 32: reset license*

Confirm the deletion with "yes. In the following dialog you can enter a new license key to activate it:

*Figure 33: enter new license key*

7.2 Repair license

The activated Eltako GFVS 3.0 license is saved in the background every hour.

If the license has been damaged by a power failure or similar, it can be restored using this menu item:

*Figure 34: restore license*

7.3 Code MeterCC

Settings in the Code Meter control center should only be performed by technical support.

7.4 Change web password

Entering a web password activates web access to GFVS. The website is available for Upload/Download from data via "http://IP-address".

8 System settings

You can make further settings via the menu item “system settings”:

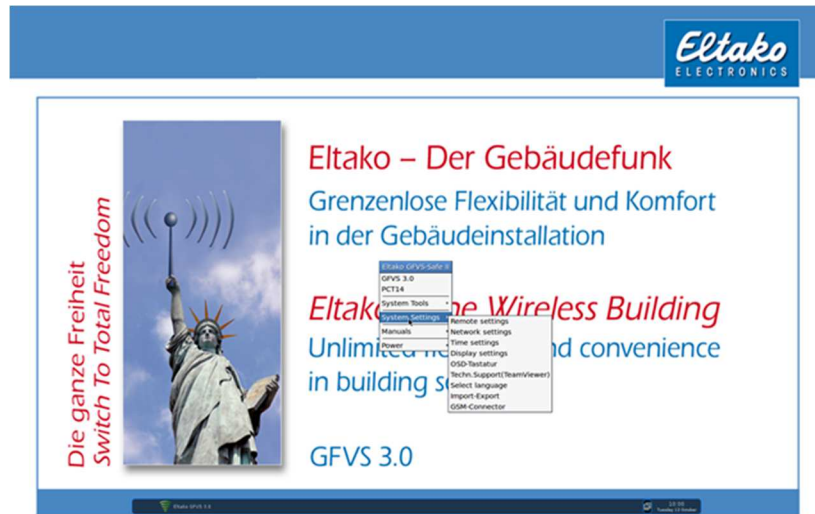


Figure 35: menu "system settings"

8.1 Techn. Support (team viewer)

Team viewer offers the possibility of remote access by technical support:



Figure 36: team viewer

8.2 Copy wallpapers

You can copy your own background images and custom icons from an USB stick to the Eltako GFVS-Safe II.

i Note: The following folder structure has to be set up on an empty USB stick:
/hc_import/pictures/*.*. Otherwise the images are not being copied.

Via the menu item “system settings - import-export” the “data transfer” window opens. Put a check mark next to “import folder” and then click the “import” button, all files are copied from the folder on the USB stick to the hard drive.

The button “clear” empties import, export or log directory, depending on the selected option.



Figure 37: copy images & icons

8.3 Export log-files

System generated log files can be copied on an USB stick. Therefore put a check next to “export directory” and then click “export”.

i Note: The following folder structure has to be set up on an empty USB stick:
/hc_export/export/*.*. Otherwise, the log files are not being copied:



Figure 38: copy images & icons

The button “clear” empties import, export or log directory, depending on the select option.

9 Switch off Eltako GFVS-Safe II

A right click on the background shows the “power” menu:

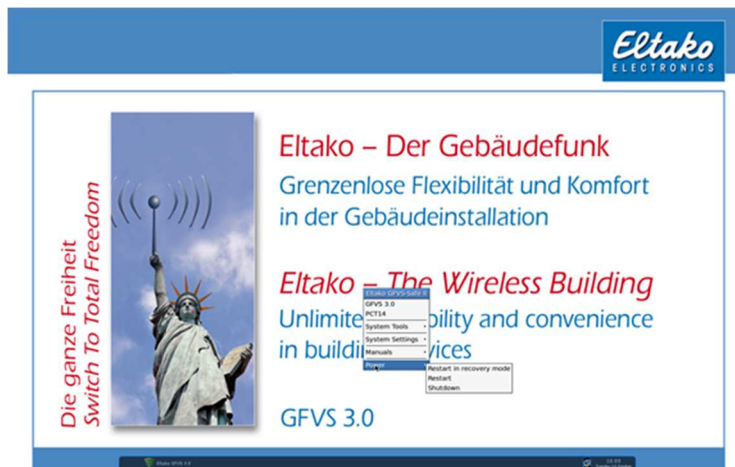


Figure 39: menu “power”

Choose if you want to restart the pc in recovery mode, reboot or turn it off.

10 Restore system backup

To restore a system backup, click on the menu “power – restart in recovery mode”. The Eltako GFVS II shuts down and starts in recovery mode.

i Note: in recovery mode, the network adapter has the IP 192.168.168.100

i Note: saved databases are not erased during a system recovery



Figure 40: menu “power”

Alternatively, you have 10 seconds during boot time using the arrow keys to select “Eltako GFVS-Safe II (recovery)”.



Figure 41: selection "Eltako GFVS Safe II (recovery)"

After booting you will see the system restore menu:



Figure 42: recovery mode

Choose between: "restore factory default backup", "recover user backup" or "restart system".

Via the button "restart system" exit the system without a system backup restore.

The button "restore factory default backup" resets the Eltako GFVS-Safe II back to its factory condition. In this case all data will be lost.

To restore a backup, select from the drop-down box and click on "recover user backup". The Eltako GFVS-Safe II will restart.



Note: Make sure the Eltako GFVS-Safe II is not disconnected from the power supply during the recovery process.

11 Technical support

For support please contact:

ELTAKO GmbH

Hofener Straße 54

70736 Fellbach

Germany

Tel. 0162 2575-124, -125, -126, -127

Fax +49711 5183740

or via E-Mail to:

Technik-Beratung@eltako.de