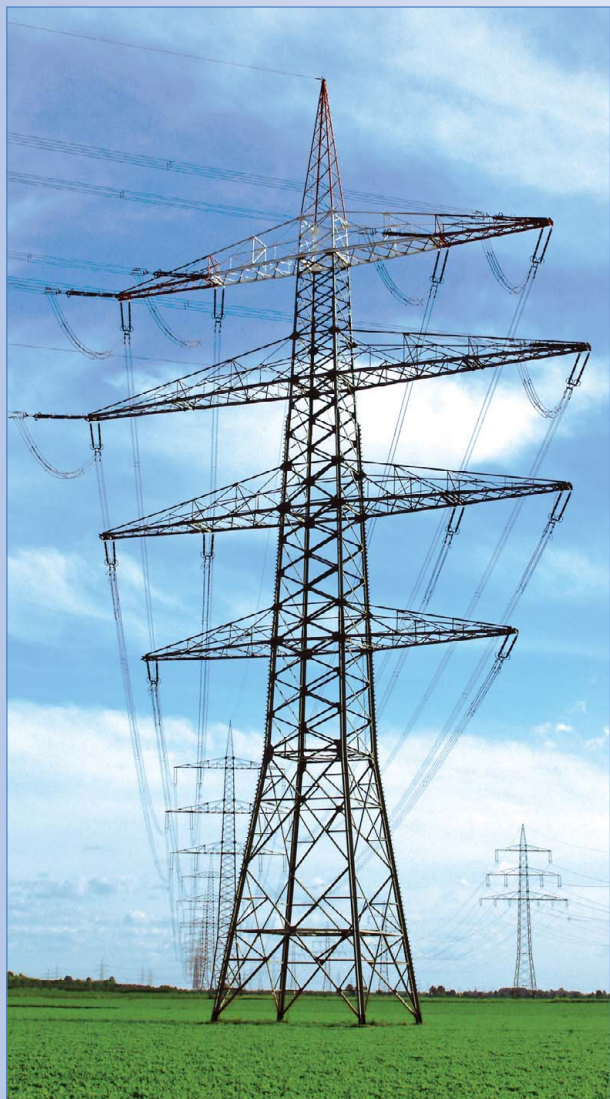


## Electronical single-phase energy meters and three-phase energy meters for meter mounting installation



The smart counting champions

### Single-phase energy meter 60A WSZ60

with drum type register and  
MID approval



### Three-phase energy meter 3x60A DSZ60

with drum type register and  
MID approval



### Three-phase energy meter 3x60A DSZ60D

with display and MID approval



- with MID approval
- follow-up models of the phase-out Ferraris meters with and without PTB
- 3-point energy meter mounting

# Single-phase energy meter WSZ60

## Three-phase energy meter DSZ60 and DSZ60D, MID approval

**WSZ60**

**MID**



### Maximum current 60A, standby loss 1.2 watt.

Single-phase energy meter for 3-point energy meter mounting.

Accuracy class B.

This single-phase energy meter measures active energy by means of the current between input and output. The internal power consumption of 1.2 watt active power is neither metered nor indicated.

1 phase conductor with a max. current up to 60A can be connected. The inrush current is 10mA. The meter can be read anytime without power supply.

Power consumption is shown by a red LED flashing at a rate of 1000 times per kWh. Permanent light: halt; light off: free of tension.

**WSZ60**

MID approval

EAN 4010312501368

**50,30 €/pc.**

**DSZ60**

**MID**



### Maximum current 3x60A, standby loss 1 watt per path.

Three-phase energy meter for 3-point energy meter mounting.

Accuracy class B.

This directly measuring three-phase energy meter measures active energy by means of the current between input and output. The internal power consumption of 1 watt active power per path is neither metered nor indicated.

1, 2 or 3 phase conductors with max. currents up to 60A can be connected.

The inrush current is 10mA. The meter can be read anytime without power supply.

The N terminal must always be connected.

Power consumption is shown by a red LED flashing at a rate of 500 times per kWh. Permanent light: halt; light off: free of tension.

**DSZ60**

MID approval

EAN 4010312501351

**97,40 €/pc.**

**DSZ60D**

**MID**



### Maximum current 3x60A, standby loss 1 watt per path.

Three-phase energy meter for 3-point energy meter mounting.

Accuracy class B.

With additional terminals to switch over to a second tariff.

This directly measuring three-phase energy meter measures active energy by means of the current between input and output. The internal power consumption of 1 watt active power per path is neither metered nor indicated.

1, 2 or 3 phase conductors with max. currents up to 60A can be connected.

The inrush current is 10mA.

The N terminal must always be connected.

**The 7 segment LC display is also legible without external power supply.**

Power consumption is shown by a red LED flashing at a rate of 500 times per kWh. Permanent light: halt; light off: free of tension.

**DSZ60D**

MID approval

EAN 4010312501344

**119,30 €/pc.**

Recommended retail prices excluding VAT.

	<b>WSZ60</b>	<b>DSZ60</b>	<b>DSZ60D</b>
Rated voltage Extended range	230 V, 50Hz -10 % / +10 %	3x230/400V, 50Hz -10 % / +10 %	3x230/400V, 50Hz -10 % / +10 %
Reference current $I_{ref}$ (Limiting current $I_{max}$ )	5 (60) A	3x5 (60) A	
Internal consumption Active power	1.2 W	1 W per path	1 W per path
Display active power	drum type register with 7 digits and 1 decimal digit		LC display 7 digits, therefrom 1 decimal digit
Accuracy class $\pm 1\%$	B	B	B
Backstop	yes	yes	yes
Inrush current	10 mA	10 mA	10 mA
Number of tariffs	1	1	2
Operating temperature	-40/+70°C		-25/+70°C
Protection degree	IP51	IP51	IP51
Maximum conductor cross section	35 mm <sup>2</sup>	35 mm <sup>2</sup>	35 mm <sup>2</sup>
weight	1.3 kg	1.7 kg	1.6 kg
dimensions	176x121x63 mm	270x178x60 mm	
EG model test certificate	DE-07-MI003-PTB 015	DE-08-MI003-PTB 013	

#### Fellbach

Eltako Headquarter  
Hofener Straße 54  
70736 Fellbach  
☎ 0711 94350000  
☎ 0711 5183740  
✉ info@eltako.de  
✉ kundenservice@eltako.de

#### Baden-Württemberg

Carsten Krampe  
75172 Pforzheim  
☎ 0173 3180392  
✉ krampe@eltako.de

#### Bavaria (North)

Horst Rock  
91126 Schwabach  
☎ 09122 61179  
☎ 09122 61159  
✉ rock@eltako.de

#### Bavaria (South)

Elka Hugo Kruschke GmbH  
82024 Taufkirchen  
☎ 089 3090409-0  
☎ 089 3090409-50  
✉ kruschke@eltako.de

#### Berlin/Brandenburg/ Saxony (East)

Olaf Knobel  
15746 Groß-Köris  
☎ 033766 21240  
☎ 033766 21241  
☎ 0176 13582503  
✉ knobel@eltako.de

#### Hamburg/Schl.-Holstein/Bremen

Gunnar Wetteborn  
25355 Barmstedt  
☎ 0176 13582502  
☎ 04123 6834673  
✉ wetteborn@eltako.de

#### Hessen

Daniel Böth  
63811 Stockstadt am Main  
☎ 0173 3180391  
✉ boeth@eltako.de

#### Mecklenburg-Vorpommern/ Brandenburg (North)/ Saxony-Anhalt (North)

Klaus-Peter Schmitz  
18276 Sarmstorf  
☎ 03843 215884  
☎ 03843 215884  
☎ 0176 13582501  
✉ schmitz@eltako.de

#### Lower Saxony

Detlef Hilker  
31840 Hessisch Oldendorf/Barksen  
☎ 05152 6984480  
☎ 0173 3180390  
✉ hilker@eltako.de

#### North Rhine-Westphalia (East)

Kay Westphal  
44265 Dortmund  
☎ 0176 13582506  
☎ 0231 734171  
✉ westphal@eltako.de

#### North Rhine-Westphalia (West)

Paul Frieg  
46395 Bocholt  
☎ 0176 13582507  
☎ 02871 310988  
✉ frieg@eltako.de

#### Rhineland-Palatinate/Saarland

Rainer Brilmayer  
55411 Bingen  
☎ 0176 13582516  
✉ brilmayer@eltako.de

#### Thuringia/Saxony (West)/ Saxony-Anhalt (South)

Andreas Misch  
39218 Schönebeck OT Elbenau  
☎ 0176 13582505  
✉ misch@eltako.de

#### Austria (West)

Representative Robert Goedicke  
☎ +43 664 1823322  
✉ goedicke@eltako.com

#### Austria (East)

Representative Andreas Kaider  
☎ +43 699 11090025  
✉ kaider@eltako.com

#### Belgium/France/ Luxembourg

Serelec n.v.  
B-9000 Gent  
☎ +32 9 2234953  
✉ info@serelec-nv.be

#### Cyprus

MeshMade Ltd  
CY 1096, Nicosia  
☎ +357 7000 6374  
✉ info@meshmade.com

#### Czech Republic

Representative Peter Loužecký  
CZ-40011 Ústí nad Labem  
☎ +420 475 621132  
☎ +420 724 175676  
✉ louzECKY@eltako.com

#### Denmark

SOLAR A/S  
DK-6600 Vejle  
☎ +45 76 961200  
✉ jni@solar.dk

#### Gulf area

M/S Golden Sand Trading  
U.A.E. – Dubai  
☎ +9 71 43595611  
✉ vasu2000@emirates.net.ae

#### Iceland

Reykjafell Ltd.  
IS-125 Reykjavik Iceland  
☎ +35 4 5886010  
✉ reykjafell@reykjafell.is

#### Israel

Avital B.S. Ltd  
Il-Holon  
☎ +97 23 5587717  
✉ avitalbs@zahav.net.il

#### Italy

Representative Tommaso Scrofani  
I-64025 Pineto TE  
☎ +39 085 9491796  
☎ +39 347 3774888  
✉ scrofani@eltako.com

#### Norway

Målthe Winje Automasjon AS  
NO-1415 Oppegard  
☎ +47 66996100  
✉ firmapost@mwa.no

#### Netherlands (North)

Representative Hans Oving  
NL-7701 WV Dedemsvaart  
☎ +31 523 616688  
☎ +31 6 21816115  
✉ oving@eltako.com

#### Netherlands (South)

Representative Dennis Schellenberg  
NL-5854 PC Bergen (LB)  
☎ +31 6 50419067  
✉ schellenberg@eltako.com

#### Portugal

TEV2 – Dist. Mat. Eléctrico, Lda  
P-4470-434 Maia  
☎ +351 229 478 170  
✉ info@tev.pt

#### Russia

ATLAS Group JSC  
RU-127591 Moscow  
☎ +7 495 6423463  
✉ eltako@atlasgroup.ru

#### Sweden (North/Middle)

Representative Patrick Savinainen  
S-69332 Degerfors  
☎ +46 070 9596906  
✉ patrick@eltako.com

#### Sweden (West/East)

Representative Dan Koril  
S-57010 Korsberga  
☎ +46 070 3201102  
✉ dan@eltako.com

#### Sweden (South)

Representative Jonas Lundquist  
S-26433 Klippan  
☎ +46 073 5815692  
✉ jonas@eltako.com

#### Switzerland

Demelectric AG  
CH-8954 Geroldswil  
☎ +41 43 4554400  
✉ info@demelectric.ch

#### Spain

Representative Thomas Klassmann  
E-08397 PINEDA/Poble Nou  
☎ +34 93 7692419  
☎ +34 650 959702  
✉ klassmann@eltako.com

#### South Africa

Innomatic (Pty) Ltd - Franz Markt  
ZA-Midrand  
☎ +27 11 8400840  
✉ sales@innomatic.co.za

#### Technical support:

☎ +49 176 13582514 ✉ thuenta@eltako.de  
☎ +49 711 94350002 ✉ technik-beratung1@eltako.de

#### Export Sales Manager:

☎ +49 711 94350005 ✉ export@eltako.de



Eltako GmbH

Hofener Straße 54, D-70736 Fellbach

☎ +49 711 94350000 ☎ +49 711 5183740  
✉ info@eltako.de 🌐 www.eltako.de