

## Electronic three-phase energy meter calibrated and with German PTB approval EDZ12WB-5A CE

Only calibrated meters are permitted for billing according to §25 of the German Calibration Law. Failure to comply is an offence according to §19.

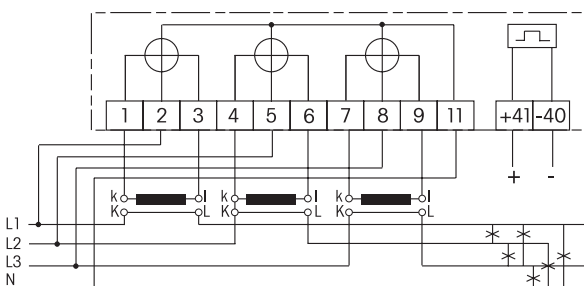
The three-phase energy meter EDZ12WB-5A for using with current transducer only for mounting on DIN-EN 50 022 rail is 6 modules = 108 mm wide and 56 mm deep.

It measures active energy by means of the currents between inputs and outputs. The internal power consumption of 1 watt active power per path is neither metered nor indicated.

2 or 3 current transducers with secondary currents up to 5 A can be connected. The inrush current is 2 mA only.

### Typical connection

#### 4-wire-connection 3x230/400 V



Display of power consumption with a red LED, 10000 Imp/kWh.

If no power is consumed the red LED is permanently illuminated. Errors are indicated on the display: L1-L2-L3 blink, if phases or input/output are inverted.

With a push-button next to the display the instantaneous values power, voltage and current per phase can be indicated.

Trifurcated rail mounting with sinistral N-connection possible.

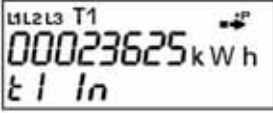


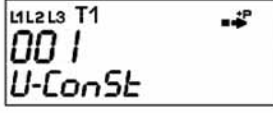
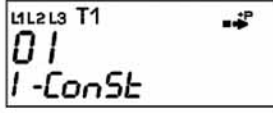




### Technical Data

Rated voltage	3x230/400V, 50Hz, tolerance $\pm 10\%$
Maximum current	5A, 50Hz
Internal power consumption	1W active power per path
Display	8 segment LC display including 3 red decimal digits
Accuracy Class	1, inaccuracy 1% max.
Inrush current	2 mA according to Accuracy Class 1
Ambient temperature limits	-10/+45°C according EN 62 053-21 (61036) for Accuracy Class 1, -20/+55°C if not Class 1
Interface	Pulse output S0 according to DIN EN 62 053-31, potential free by an OptoMOS unit, max. 230V UC, 100mA, pulse length 100ms, 1000 Imp/kWh.
Terminal cover sealable	This energy meter is equipped with a sealable terminal cover
Protection degree	IP 50
Maximum conductor cross-section	S0 terminals 2.5mm <sup>2</sup> , otherwise 6mm <sup>2</sup>
Compliance with	EN 62 053-21 (61 036)

In the standard mode the meter is in the standard menu. On the display the energy value of tariff 1 is indicated. At a short push of the button (<2 sec) it will be changed to the next menu item.

Through a longer push of the button (>5 sec) the display switches from each item of the standard menu back to the standard display. This happens also if the button is not operated for more than 5 minutes.

### Standard menu

Meaning	Display
Standard display, Tariff 1	
Display test	
Tariff 1	
U transducer constant	
I transducer constant	
Output constant per imp./kWh	
Pulse length per sec	
Error register	
Firmware version	

### Warning

**Only a trained electrician may install this equipment, otherwise there is a risk of fire or electric shock.**

05/2007 Specifications subject to change.